

FLOOREQUIPMENTPARTS.COM

MM144
4-85

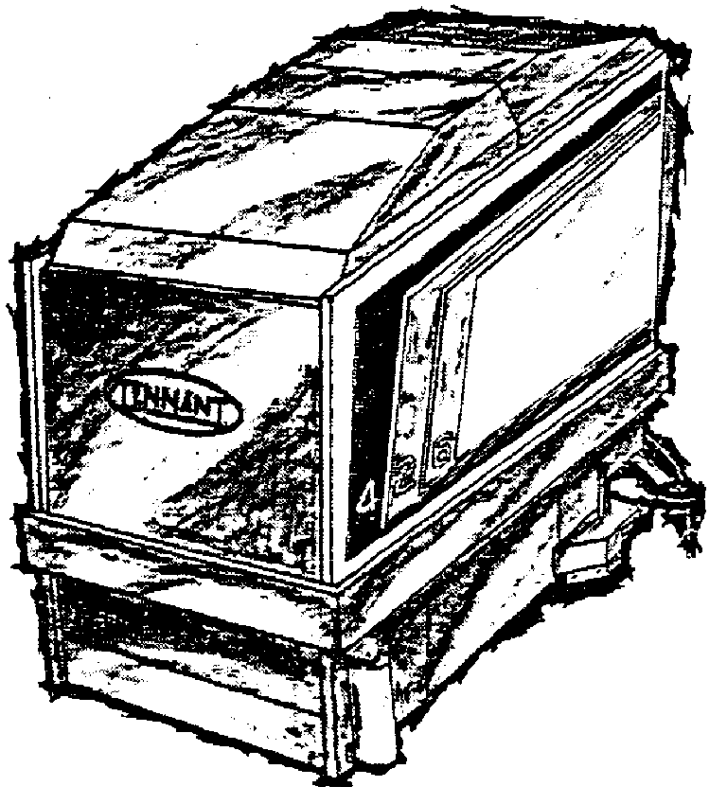


426

Parts Manual

POWER SCRUBBER

Operation, Maintenance, and Parts Manual



SPECIALIZED MAINTENANCE SYSTEMS

SWEEPERS • SCRUBBERS • SCARIFIERS • FLOOR COATINGS

Home

Find...

Go To..





426

POWER SCRUBBER

This manual is furnished with each new TENNANT® 426 Power Scrubber. The machine operators will easily learn how to operate the machine and understand its mechanical functions by following the directions and absorbing the information under Operation.

This machine will give excellent service and scrubbing results and save maintenance expenses. However, as with all specially engineered mechanical equipment, best results are obtained at minimum costs if:

- The machine is operated with reasonable care and
- The machine is maintained regularly per the maintenance instructions provided.
- Components used in this machine have been carefully selected for performance and safety. Use only Tennant Company supplied or equivalent parts.

Parts and supplies may be ordered by phone or mail from any Tennant Company parts and service center, distributor, or from any of the Tennant Company subsidiaries.

The telephone, telex, mailing addresses, and locations are listed on the last page of the manual.

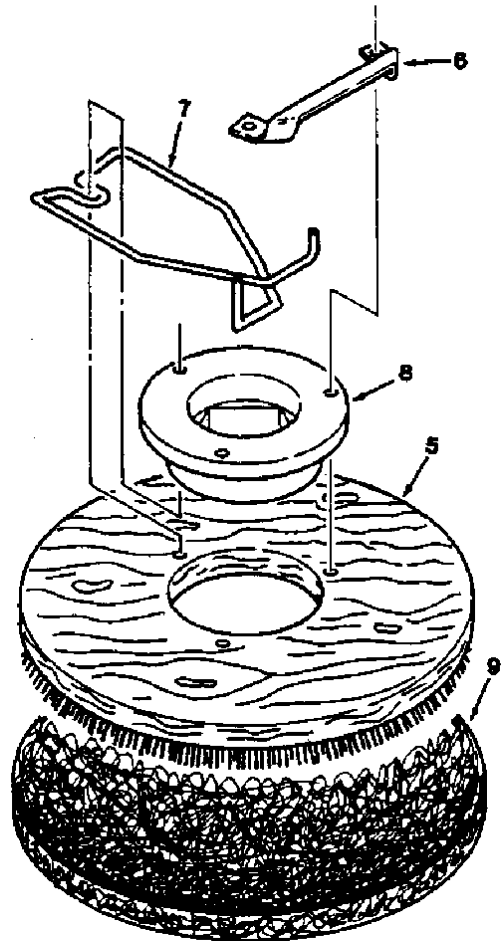
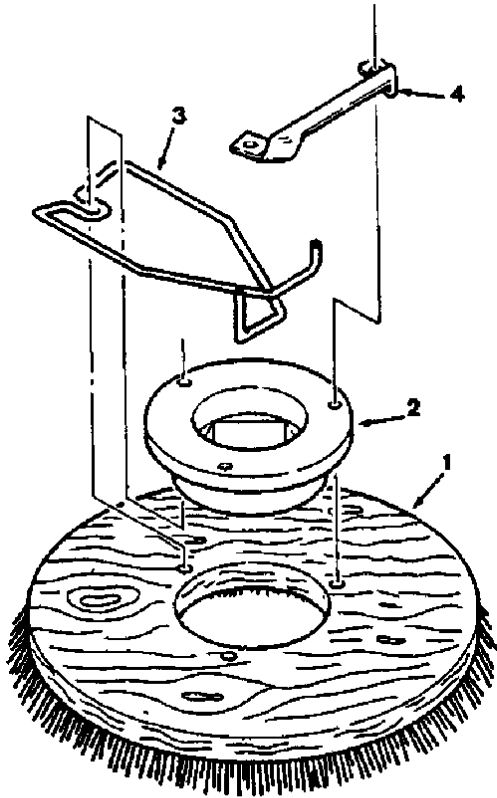
MANUAL NO. MM144
Published: 4-85

Trademark Registered in: Austria, Belgium, Denmark, England, France, Germany, Italy, Spain, Switzerland, United States, Argentina, Australia, Canada, Japan, Mexico, Sweden, by TENNANT COMPANY, Minneapolis, Minnesota, U.S.A.

01351

©1985, Tennant Company, Printed in U.S.A





REPLACEMENT BRUSHES

REPLACEMENT BRUSHES

Q1401

KEY	TENNANT® PART NO.	MACHINE SERIAL NUMBER	DESCRIPTION	QTY.
1	89556	(-)	BRUSH ASSEMBLY, Heavy polypropylene	2
2	89216	(-)	ADAPTOR, Brush	1
3	02853	(-)	SPRING	1
4	02856	(-)	BRACKET	1
	89557	(-)	BRUSH ASSEMBLY, Abrasive	2
	89216	(-)	ADAPTOR, Brush	1
	02853	(-)	SPRING	1
	02856	(-)	BRACKET	1
	89558	(-)	BRUSH ASSEMBLY, Wire	2
	89216	(-)	ADAPTOR, Brush	1
	02853	(-)	SPRING	1
	02856	(-)	BRACKET	1
	89555	(-)	BRUSH ASSEMBLY, Bassine	2
	89216	(-)	ADAPTOR, Brush	1
	02853	(-)	SPRING	1
	02856	(-)	BRACKET	1
	02865	(-)	BRUSH ASSEMBLY, Soft nylon	2
	89216	(-)	ADAPTOR, Brush	1
	02853	(-)	SPRING	1
	02856	(-)	BRACKET	1
5	89045	(-)	BRUSH ASSEMBLY, Insta-lok	2
6	02856	(-)	BRACKET	1
7	02853	(-)	SPRING	1
8	89216	(-)	ADAPTOR, Brush	1
9	89046	(-)	PAD, Brown stripper	2
9	89047	(-)	PAD, Blue cleaner	2
9	89048	(-)	PAD, Red buffer	2
9	89049	(-)	PAD, White super polish	2

RECOMMENDED GENERAL MAINTENANCE ITEMS

01410

KEY	TENNANT® PART NO.	MACHINE SERIAL NUMBER	DESCRIPTION	QTY.
	89575	(-)	REPLACEMENT PARTS PACKAGE	1
	89024	(-)	SEAL, Vacuum fan	2
	89320	(-)	FILTER, Vacuum fan	1
	89032	(-)	SKIRT, Brush, R.H.	1
	89033	(-)	SKIRT, Brush, L.H.	1
	89034	(-)	BLADE, Front squeegee	1
	89031	(-)	BLADE, Rear squeegee	1
	89035	(-)	STRIP, Squeegee backup	1
	89418	(-)	CIRCUIT BREAKER, 22 A	1
	89105	(-)	HOSE, Squeegee	1
	89316	(-)	FLOAT	1
	89408	(-)	PADS, Brake	1
	89275	(-)	RESISTOR ASSEMBLY, Speed control	1
	89566	(-)	KEY, Master power switch	1
	89187	(-)	CABLE, Squeegee lift	1
	89410	(-)	CONTROLLER	1
	89500	(-)	SKIRT, Scrubber head cover	1
	89146	(-)	GUIDE, Ceramic	1
	89183	(-)	PIN, Hair cotter	1
	89404	(-)	CAM, R.H.	1
	89628	(-)	CAM	1
	89152	(-)	CIRCUIT BREAKER, 15 A	2
	89610	(-)	REPAIR KIT, Motor brushes, vacuum fan	2
	89611	(-)	REPAIR KIT, Motor brushes, vacuum fan, industrial version	2
	89102	(-)	GASKET, Adaptor, industrial version	2
	89394	(-)	FILTER, Vacuum fan, industrial version	1

SECTION 5 STANDARD MODEL PARTS

CONTENTS

	Page
Ordering Repair Parts.....	5-1
Fig. 1 - Main Frame Group	5-2
Fig. 2 - Shrouding Group	5-4
Fig. 3 - Batteries Group	5-6
Fig. 4 - Wire Harness Group	5-7
Fig. 5 - Solution and Recovery Tanks Group.....	5-8
Fig. 6 - Drive Carriage Assembly	5-10
Fig. 7 - Control Console Group.....	5-12
Fig. 8 - Rear Panel Group.....	5-14
Fig. 9 - Scrub Head Lift Group.....	5-16
Fig. 10 - Scrub Brush Drive Group.....	5-18
Fig. 11 - Rear Squeegee Group	5-20

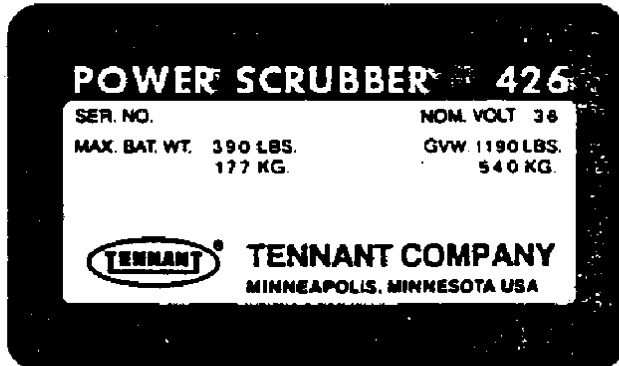
NOTE: Section 5, Standard Model Parts, lists every repair part of a standard Model 426.

ORDERING REPAIR PARTS

The components used in this machine have been carefully selected for performance and safety. Use only Tennant Company supplied or equivalent parts.

To avoid errors or delays in filling your parts orders, please furnish all of the following information.

1. Refer to Tennant Company data plate. Always specify the machine model number and the machine serial number shown on the machine data plate.



2. Give the part number, description, and the quantity needed of each item on the order. Do not order by reference number or the figure number of the illustrated parts.
3. Indented items indicate parts of assemblies. Standard hardware is furnished only when part of a purchased assembly. Please order hardware from a local hardware supplier.
4. If the old part cannot be identified, send it to us with the quantity needed specified on the order.
5. State definite shipping instructions to include the shipping address and/or the billing address if there is a difference. Any claim for loss or damage to a shipment in transit should be filed promptly against the transportation company making the delivery. Shipments will be complete unless the packing list or order acknowledgment indicate items back ordered.

If parts received are suspected to be incorrect or defective, please write, wire, or phone the Tennant Company representative from whom you ordered the part. They will give authorization for return and/or handle replacement shipments when required.

SI (INTERNATIONAL SYSTEM) UNITS OF MEASURE

Metric equivalents have been included, where applicable, throughout this parts catalog.

SERIAL NUMBER INFORMATION EXPLANATION

Serial number information is listed parenthetically to show on which machines each part can be used. These listings are explained by the following examples:

() The part can be used on all machines.

(0000001234-) The part can be used on all machines beginning with the serial number listed.

(0000000000-0000001234) The part can be used on all machines up to and including serial number listed.

(0000001234-0000005678) The part can be used on all machines between and including the serial numbers listed.

Where XXXXX's are listed in place of a serial number, it indicates a serial number change was made but the exact serial number had not been established when the catalog went to press.

(Specifications and design subject to change without notice.)

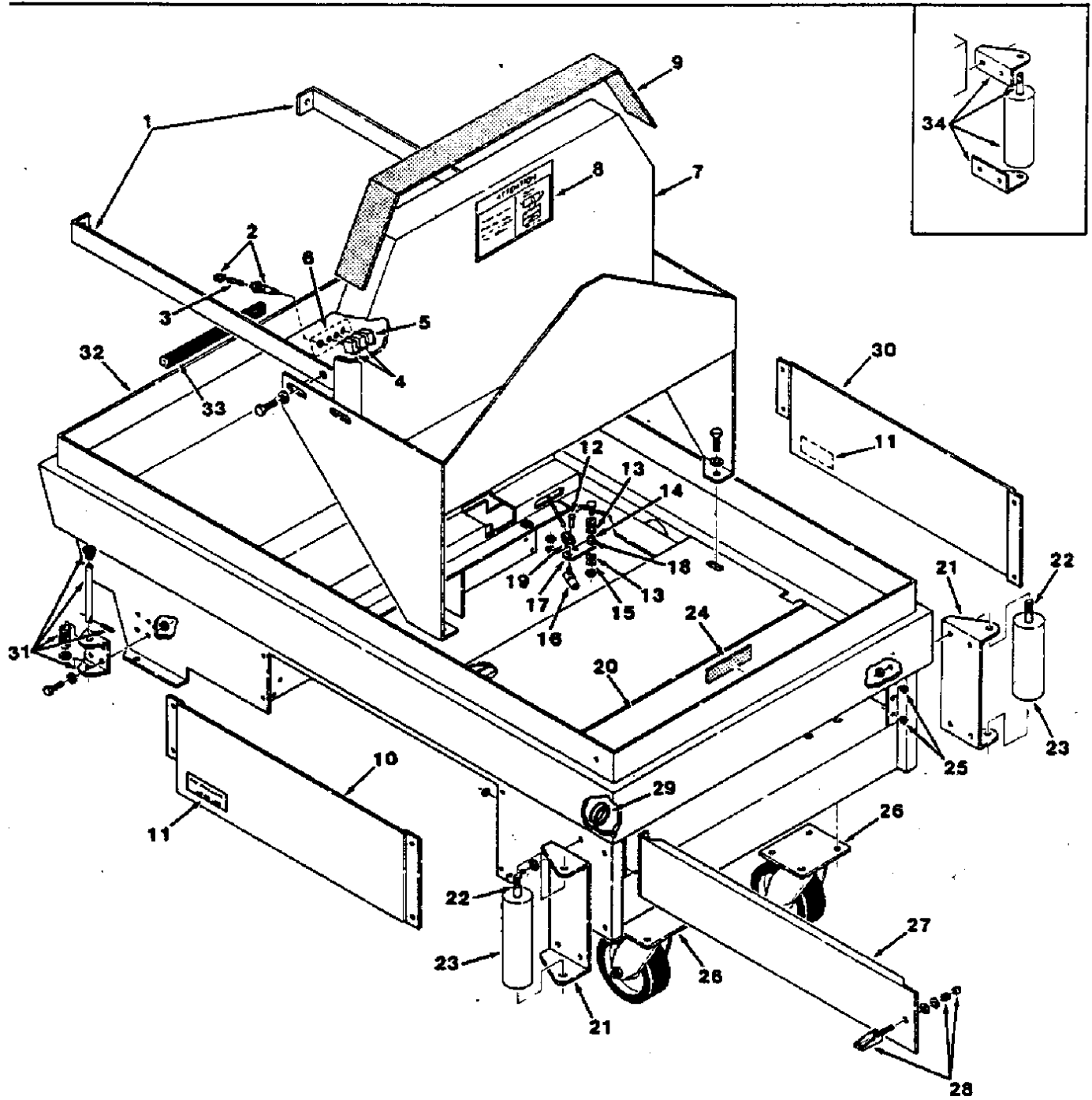


FIG. 1 - MAIN FRAME GROUP

FIG. 1 - MAIN FRAME GROUP

01405

KEY	TENNANT® PART NO.	MACHINE SERIAL NUMBER	DESCRIPTION	QTY.
1	89125	(-)	STRAP, Battery	2
2	89602	(-)	FUSE HOLDER	1
3	89603	(-)	FUSE, 15 A	1
4	89152	(-)	CIRCUIT BREAKER	2
5	89418	(-)	CIRCUIT BREAKER	1
6	89069	(-)	DECAL, Fuse and breaker	1
7	89684	(-)	SUPPORT ASSEMBLY, Battery	1
8	89037	(-)	LABEL, Attention, battery hook	1
9	89057	(-)	CUSHION, Hood support	1
10	89378	(-)	PANEL	1
11	89017	(-)	LABEL, Tire pressure	2
12	89067	(-)	PIN, Clevis	2
13	89147	(-)	WASHER, Nylon	4
14	89163	(-)	SLEEVE, Bearing	2
15	89319	(-)	SHIM	2
16	89153	(-)	BALL JOINT	2
17	89270	(-)	LINK ASSEMBLY, Brake	2
18	89142	(-)	BEARING, Journal	1
19	89080	(-)	CLEVIS, Removable	2
20	89098	(-)	PLATE, Weight	1
21	89664	(0000012054-	BRACKET, Roller	2
22	89666	(0000012054-	SHAFT, Roller	2
23	89665	(0000012054-	ROLLER, Wall	2
24	89660	(-)	INSULATION	1
25	89056	(0000000000-xxxxxxxxxx)	BUMPER, Rubber	2
26	89637	(-)	CASTER	2
27	89376	(-)	DOOR, Front	1
28	89122	(-)	LATCH, Swell	1
29	89063	(-)	GROMMET, Strip	1
30	89379	(-)	PANEL	1
31	89289	(-)	ROD ASSEMBLY, Latch	2
32	89375	(-)	FRAME, Main	1
33	89489	(-)	MOLDING	1
34	89662	(0000000000-0000012053)	REPLACEMENT KIT, Roller	2

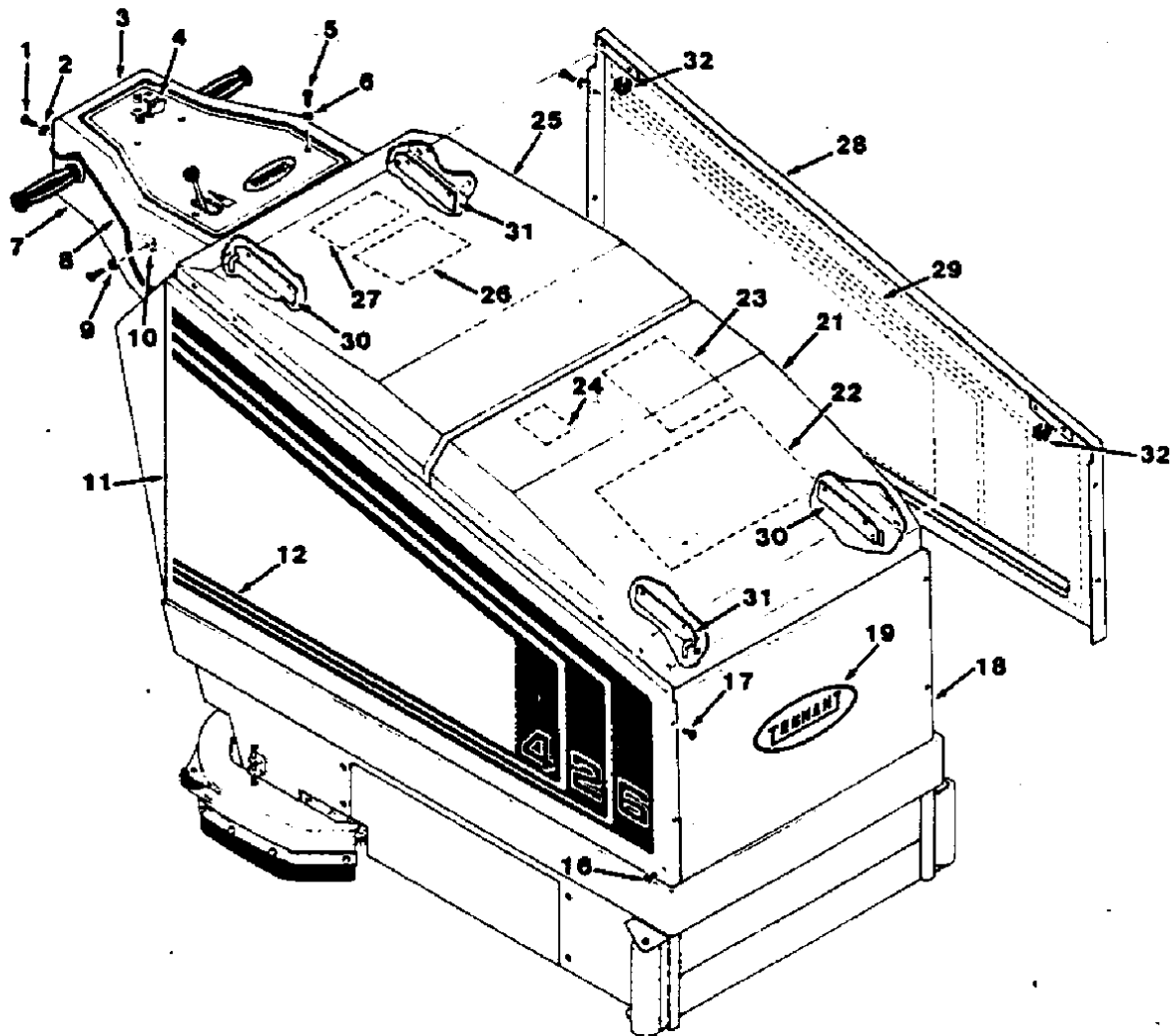
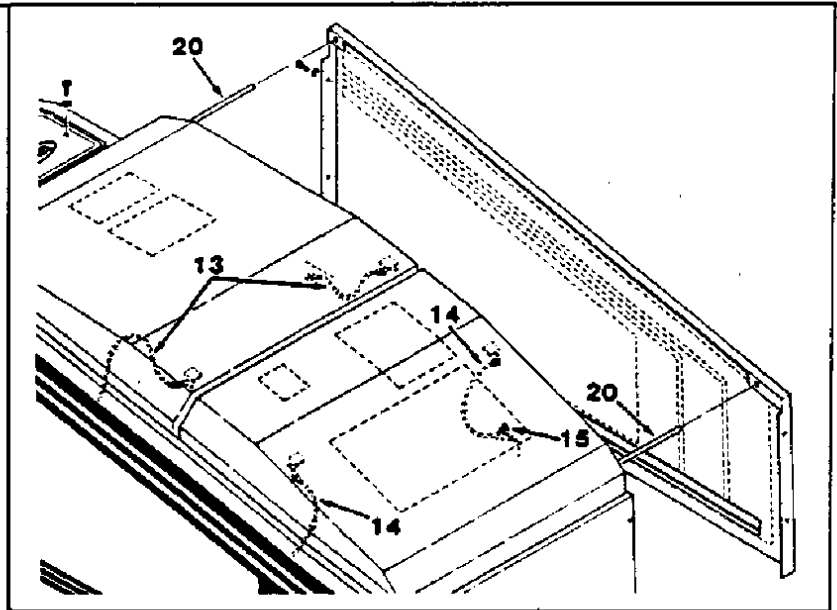


FIG. 2 - SHROUDING GROUP

FIG. 2 - SHROUDING GROUP

01404

KEY	TENNANT® PART NO.	MACHINE SERIAL NUMBER	DESCRIPTION	QTY.
1	89441	(-)	SCREW, Button head	2
2	19324	(-)	WASHER	2
3	89359	(-)	COVER, Console, upper	1
4	89382	(-)	DECAL, Console cover	1
5	89447	(-)	SCREW, Flat head	4
6	89437	(-)	WASHER, Finish	4
7	89360	(-)	COVER, Console, lower	1
8	89072	(-)	MOLDING, Console cover, upper	1
9	89438	(-)	WASHER, Finish	4
10	89440	(000000000-0000011831)	NUT, Speed	6
10	89659	(0000011832-)	NUT, Tinnerman	6
11	89528	(000000000-0000011494)	PANEL ASSEMBLY, Side, R.H.	1
11	89508	(0000011495-)	PANEL ASSEMBLY, Side, R.H.	1
12	89022	(-)	LABEL, Stripe, R.H.	1
13	89326	(000000000-0000011494)	CABLE, Rear	2
14	89235	(000000000-0000011494)	CABLE, Front	2
15	89054	(000000000-0000011494)	HOOK	6
16	89435	(-)	SCREW, Button head	10
17	89477	(-)	SCREW, Button head	4
18	89363	(000000000-0000011494)	PANEL, Front	1
18	89496	(0000011495-)	PANEL, Front	1
19	89609	(-)	DECAL, TENNANT®	1
20	89052	(000000000-0000011494)	ROD	2
21	89526	(000000000-0000011494)	HOOD ASSEMBLY, Front	1
21	89506	(0000011495-)	HOOD ASSEMBLY, Front	1
22	89488	(-)	DECAL, Wiring diagram	1
23	89016	(-)	LABEL, Battery charger	1
24	89612	(-)	DECAL, Caution, charging	1
25	89527	(000000000-0000011494)	HOOD ASSEMBLY, Rear	1
25	89507	(0000011495-)	HOOD ASSEMBLY, Rear	1
26	89638	(-)	DECAL, Warning, cleaning agents	1
27	32784	(-)	DECAL, For safety	1
28	89529	(000000000-0000011494)	PANEL ASSEMBLY, Side, L.H.	1
28	89509	(0000011495-)	PANEL ASSEMBLY, Side, L.H.	1
29	89023	(-)	LABEL, Stripe, L.H.	1
30	89523	(0000011495-)	BRACKET, Pivot	2
31	89524	(0000011495-)	BRACKET, Pivot	2
32	89525	(0000011495-)	BUMPER, Hood	4

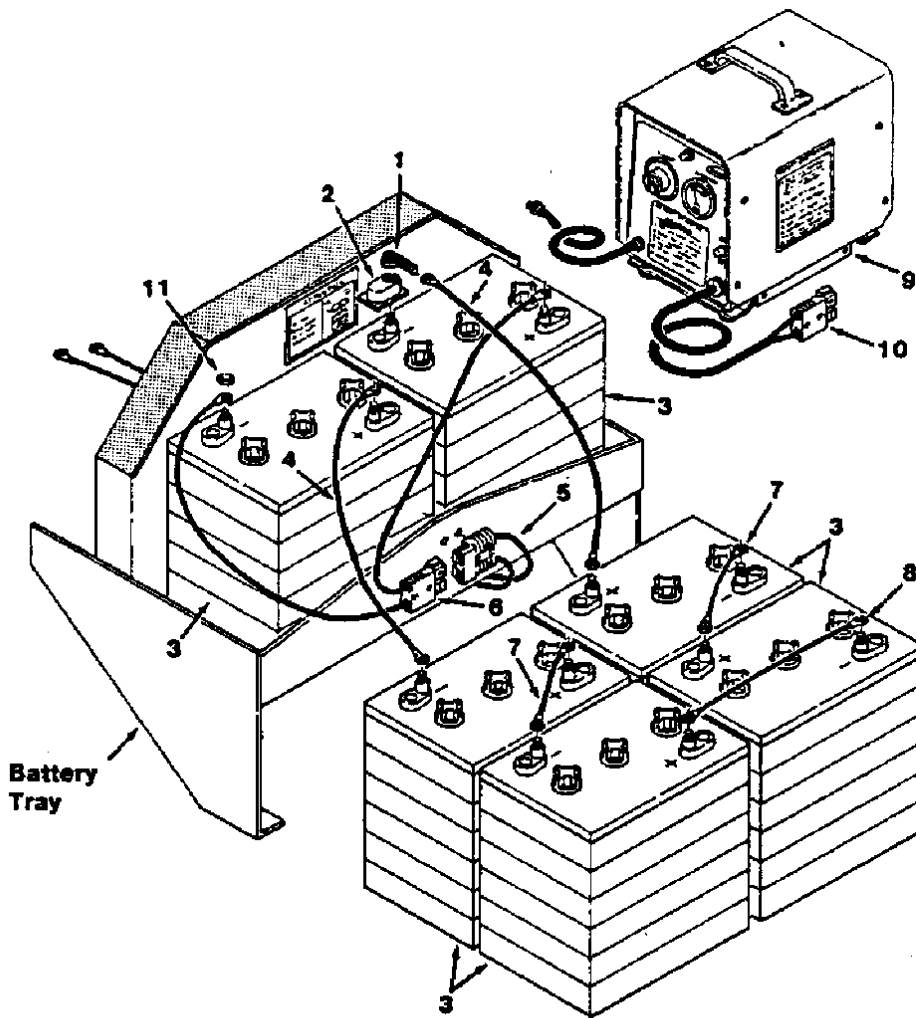


FIG. 3 - BATTERY GROUP

01357

KEY	TENNANT® PART NO.	MACHINE SERIAL NUMBER	DESCRIPTION	QTY.
1	89606	(-)	BOOT, Cable	12
2	89619	(-)	COVER, Terminal	12
3	89630	(-)	BATTERY, 220 A, 6 V, wet	6
4	89013	(-)	CABLE, Battery	2
5	89253	(-)	CABLE, Battery	1
6	89014	(-)	CABLE, Battery	1
7	89633	(-)	CABLE, Battery	2
8	89632	(-)	CABLE, Battery	1
9	89629	(-)	CHARGER, Battery, 60 HZ	1
10	89647	(-)	CONNECTOR	1
11	32984	(-)	WASHER	12

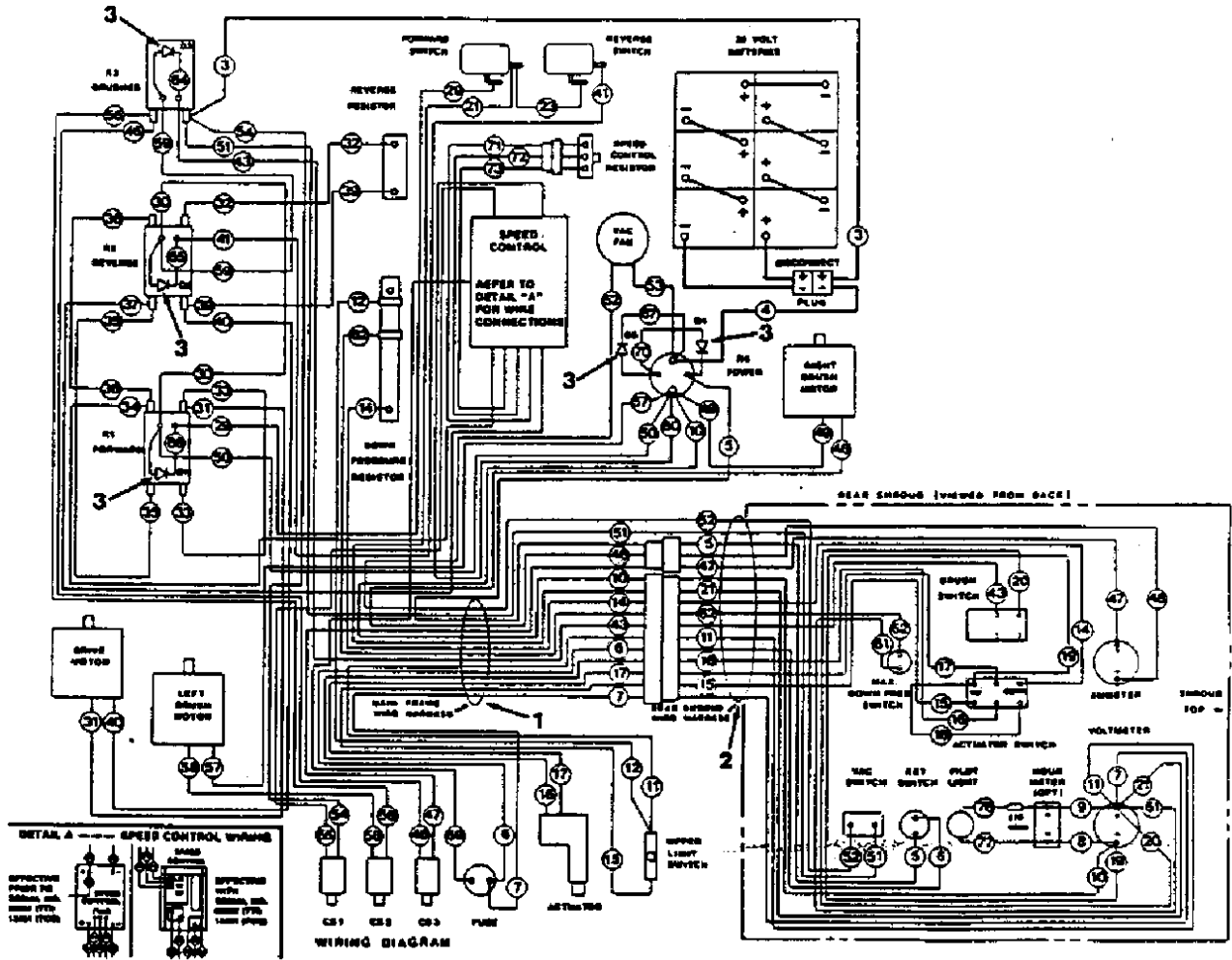


FIG. 4 - WIRE HARNESS GROUP

01398

KEY	TENNANT® PART NO.	MACHINE SERIAL NUMBER	DESCRIPTION	QTY.
1	89491	(-)	WIRE HARNESS, Frame	1
2	89330	(-)	WIRE HARNESS, Shroud	1
3	89730	(000000000-0000012851)	KIT, Diode service	1
3	89731	(0000012852-)	DIODE	5

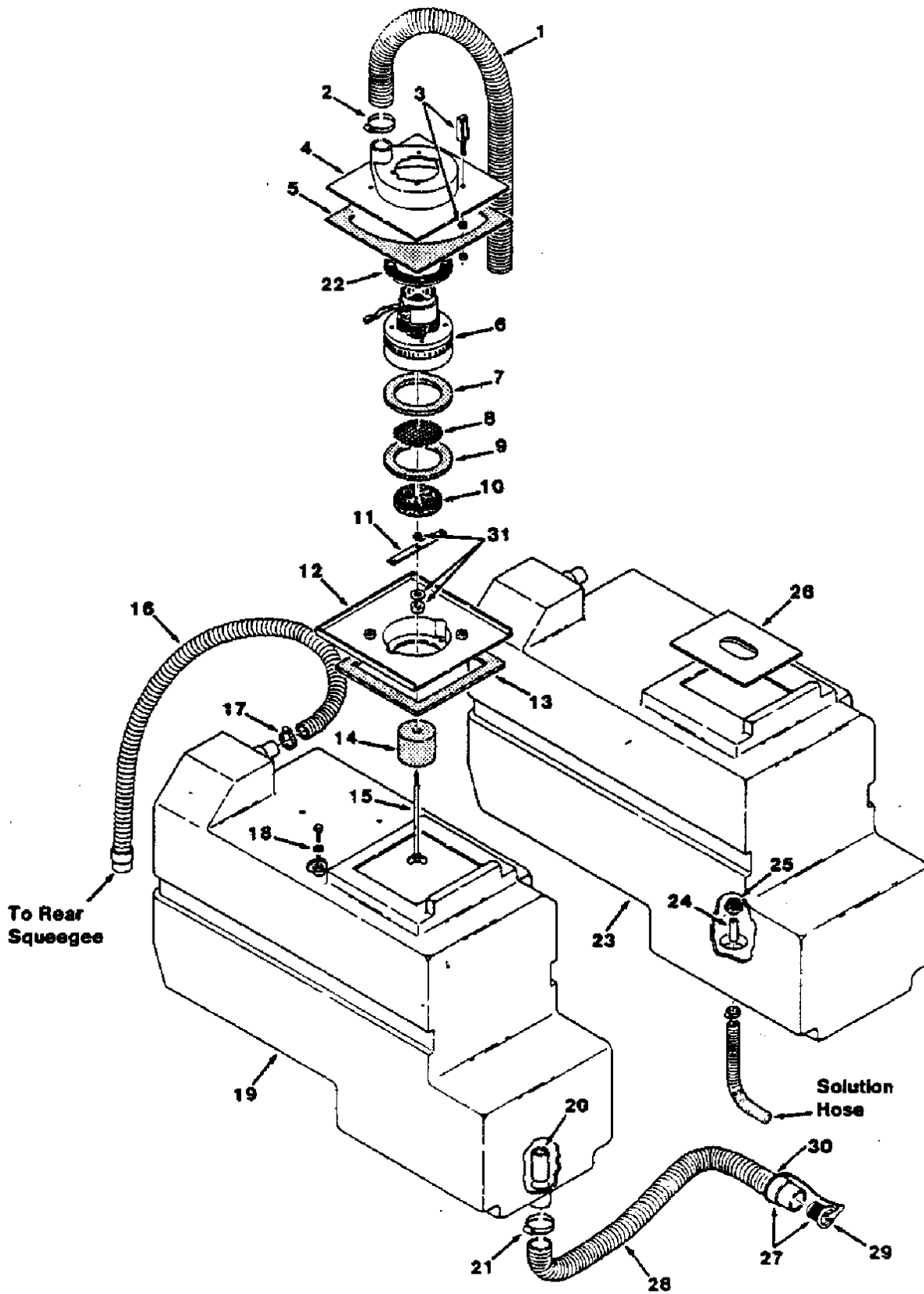


FIG. 5 - SOLUTION AND RECOVERY TANKS GROUP

FIG. 5 - SOLUTION AND RECOVERY TANKS GROUP

01399

KEY	TENNANT® PART NO.	MACHINE SERIAL NUMBER	DESCRIPTION	QTY.
1	89096	(0000000000-0000013383)	HOSE, Exhaust	1
2	89256	(0000000000-0000013383)	CLAMP, Hose	1
3	89122	(-)	LATCH, Swell	2
4	89236	(-)	SHROUD, Fan	1
5	89232	(-)	GASKET, Fan shroud	1
6	89622	(-)	FAN, Vacuum	1
7	89024	(-)	SEAL, Vacuum fan	1
8	89094	(-)	SCREEN, Filter	1
9	89024	(-)	SEAL, Vacuum fan	1
10	89320	(-)	FILTER, Vacuum fan	1
11	89075	(-)	STRIP, Stem mounting	1
12	89247	(-)	SUPPORT, Fan	1
13	89102	(-)	GASKET, Adaptor	1
14	89316	(-)	FLOAT	1
15	89317	(-)	GUIDE, Float	1
16	89105	(-)	HOSE	1
17	89255	(-)	CLAMP, Hose	1
18	89322	(-)	WASHER, Sealing	3
19	89332	(-)	TANK, Recovery	1
20	89352	(0000000000-0000012014)	SLEEVE	1
21	89256	(-)	CLAMP, Hose	1
22	89490	(-)	SHIM	1
23	89258	(-)	TANK, Solution	1
24	89087	(-)	SLEEVE	1
25	89077	(-)	STRAINER, Solution tank	1
26	89321	(-)	COVER, Solution tank	1
27	89422	(-)	HOSE AND PLUG ASSEMBLY	1
28	89580	(-)	HOSE	1
29	89581	(-)	PLUG	1
30	89582	(-)	TIE, Wire	1
31	89505	(-)	SEAL KIT, Fan	1

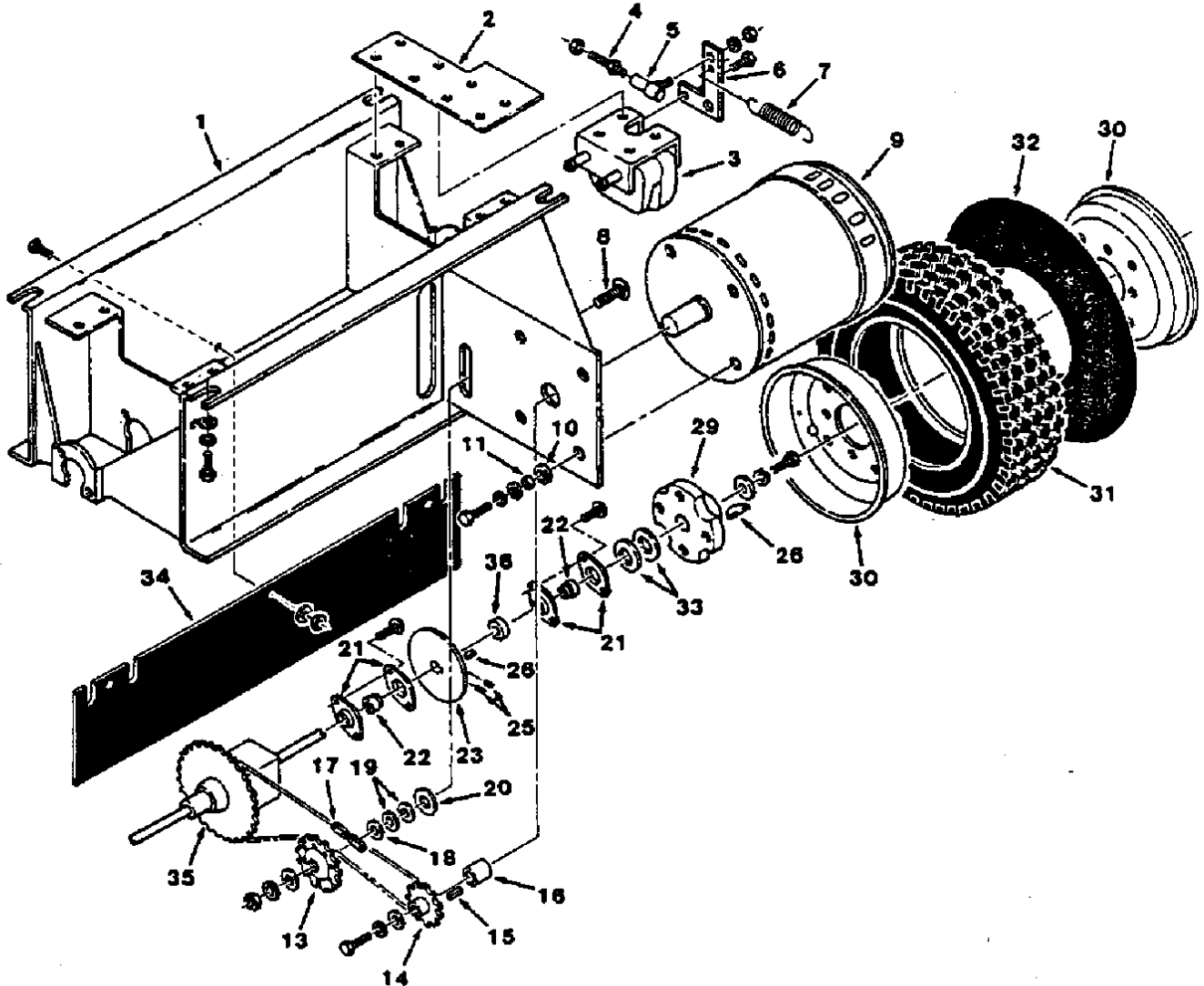
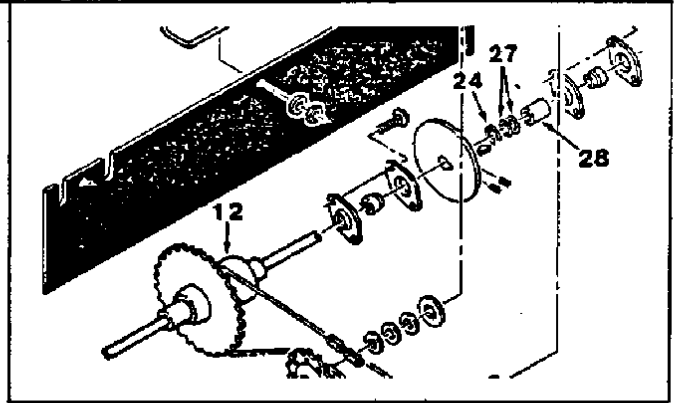


FIG. 6 - DRIVE CARRIAGF ASSEMBLY

FIG. 6 - DRIVE CARRIAGE ASSEMBLY

01408

KEY	TENNANT® PART NO.	MACHINE SERIAL NUMBER	DESCRIPTION	QTY.
	89292	(-)	CARRIAGE ASSEMBLY, Drive	1
1	89259	(-)	CARRIAGE	1
2	89367	(-)	BRACKET, Brake mounting	2
3	89206	(-)	BRAKE, Disc	2
	89504	(-)	REPAIR KIT, Brake pads	1
4	89161	(-)	ROD, Threaded	2
5	89605	(-)	BALL JOINT	2
6	89182	(-)	BELLCRANK, Brake	2
7	89672	(-)	SPRING	2
8	32972	(-)	BOLT, Carriage	1
9	89631	(-)	MOTOR, Electric	1
10	89174	(-)	GROMMET	4
11	89171	(-)	SLEEVE, Grommet	4
12	89695	(000000000-0000012476)	DIFFERENTIAL KIT	1
13	89188	(-)	SPROCKET, 18 tooth	1
14	89203	(-)	SPROCKET, 10 tooth	1
15	89601	(-)	KEY, Square	1
16	89175	(-)	SPACER	1
17	89139	(-)	CHAIN	1
18	32486	(-)	WASHER	1
19	89358	(-)	SHIM	4
20	89173	(-)	WASHER	1
21	89615	(-)	FLANGE, Bearing	8
22	89495	(-)	BEARING REPLACEMENT KIT	4
23	89213	(-)	HUB AND DISC	2
24	89170	(000000000-0000012476)	RING, Retaining	2
25	39319	(-)	SCREW, Set	4
26	89137	(-)	KEY, Woodruff	4
27	89140	(000000000-0000012476)	SHIM	4
28	89502	(000000000-0000012476)	SPACER	2
29	89176	(-)	HUB, Drive wheel	2
	89616	(-)	TIRE AND RIM ASSEMBLY	2
30	89646	(-)	RIM, Half	2
31	89625	(-)	TIRE	1
32	89626	(-)	TUBE, Tire	1
33	89358	(-)	SHIM	4
34	89499	(000000000-0000011104)	SKIRT KIT	1
34	89567	(0000011105-	SKIRT	1
35	89694	(0000012477-	DIFFERENTIAL	1
36	89693	(0000012477-	COLLAR	2

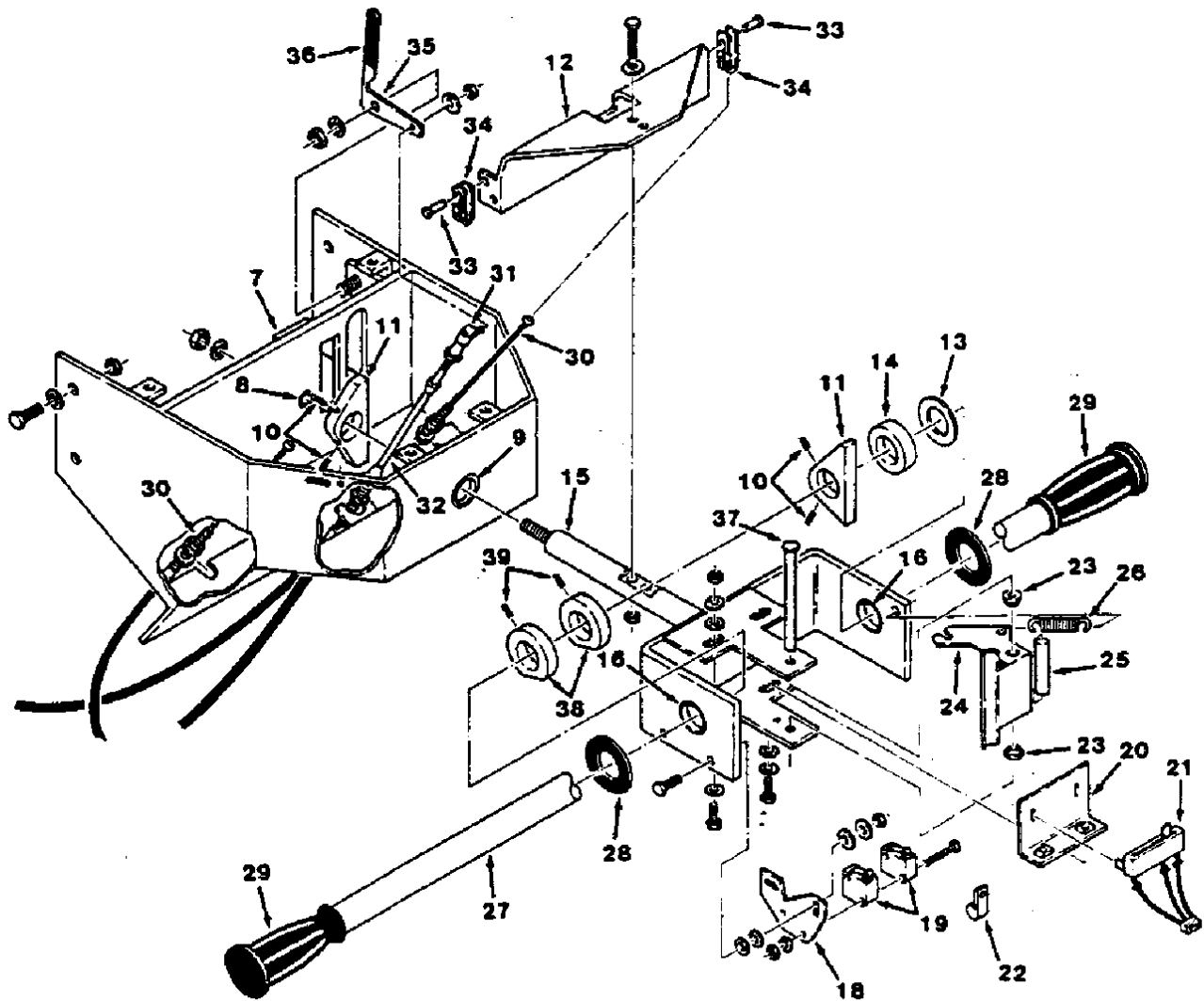
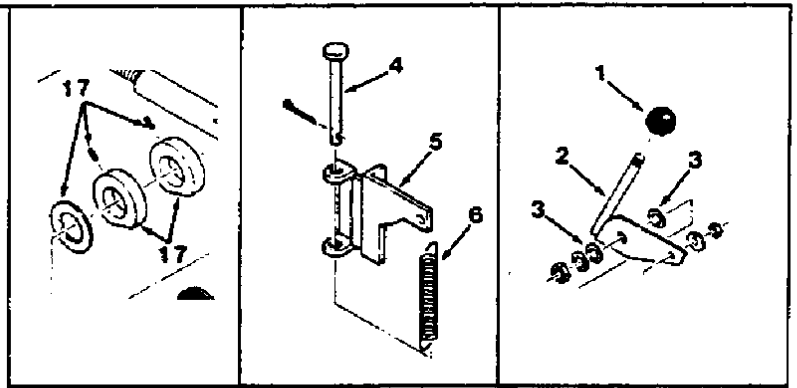


FIG. 7 - CONTROL CONSOLE GROUP

FIG. 7 - CONTROL CONSOLE GROUP

01403

KEY	TENNANT® PART NO.	MACHINE SERIAL NUMBER	DESCRIPTION	QTY.
1	89090	(0000000000-0000012086)	KNOB	1
2	89245	(0000000000-0000012086)	HANDLE, Water	1
3	89147	(0000000000-0000012086)	WASHER, Nylon	2
4	89082	(0000000000-0000011514)	PIN, Clevis	1
5	89229	(0000000000-0000011514)	BELLCRANK, Brake	1
6	89058	(0000000000-0000011514)	SPRING	1
7	89406	(-)	CONSOLE ASSEMBLY	1
8	89142	(-)	BEARING, Journal	1
9	89093	(-)	BUSHING	1
10	89436	(-)	SCREW, Set	4
11	89671	(-)	CAM ASSEMBLY, Speed	2
12	89234	(-)	ARM, Steering	1
13	89091	(-)	WASHER, Nylon	1
14	89241	(-)	COLLAR, Shaft	1
15	87268	(0000000000-0000012665)	YOKE ASSEMBLY, Steering	1
15	89700	(0000012666-)	YOKE ASSEMBLY, Steering	1
16	89093	(-)	BUSHING	2
17	89699	(0000000000-0000012665)	DIRECTION CAM KIT	1
18	89339	(-)	BRACKET, Switch mounting	1
19	89104	(-)	SWITCH	2
20	89340	(-)	BRACKET, Resistor	1
21	89275	(-)	RESISTOR, Speed control	1
22	89354	(-)	CLAMP, Adjustable wire	1
23	89089	(-)	BEARING, Flange	2
24	89658	(-)	CAM, Resistor actuating	1
25	89113	(0000000000-0000012665)	SLEEVE	1
26	89085	(-)	SPRING	1
27	89596	(-)	TUBE	1
28	89070	(-)	WASHER, Neoprene	2
29	89086	(-)	GRIP, Handle bar	2
30	89224	(-)	CABLE, Brake	2
31	89620	(-)	BALL JOINT	1
32	89228	(-)	CABLE	1
33	89067	(-)	PIN, Clevis	2
34	89080	(-)	CLEVIS, Removable	2
	89656	(0000012087-)	HANDLE ASSEMBLY, Water	1
35	89655	(0000012087-)	HANDLE, Water	1
36	89654	(0000012087-)	HANDLE, Grip	1
37	89705	(0000012666-)	PIN, Clevis	1
38	89701	(0000012666-)	COLLAR	2
39	89702	(0000012666-)	SET SCREW	2

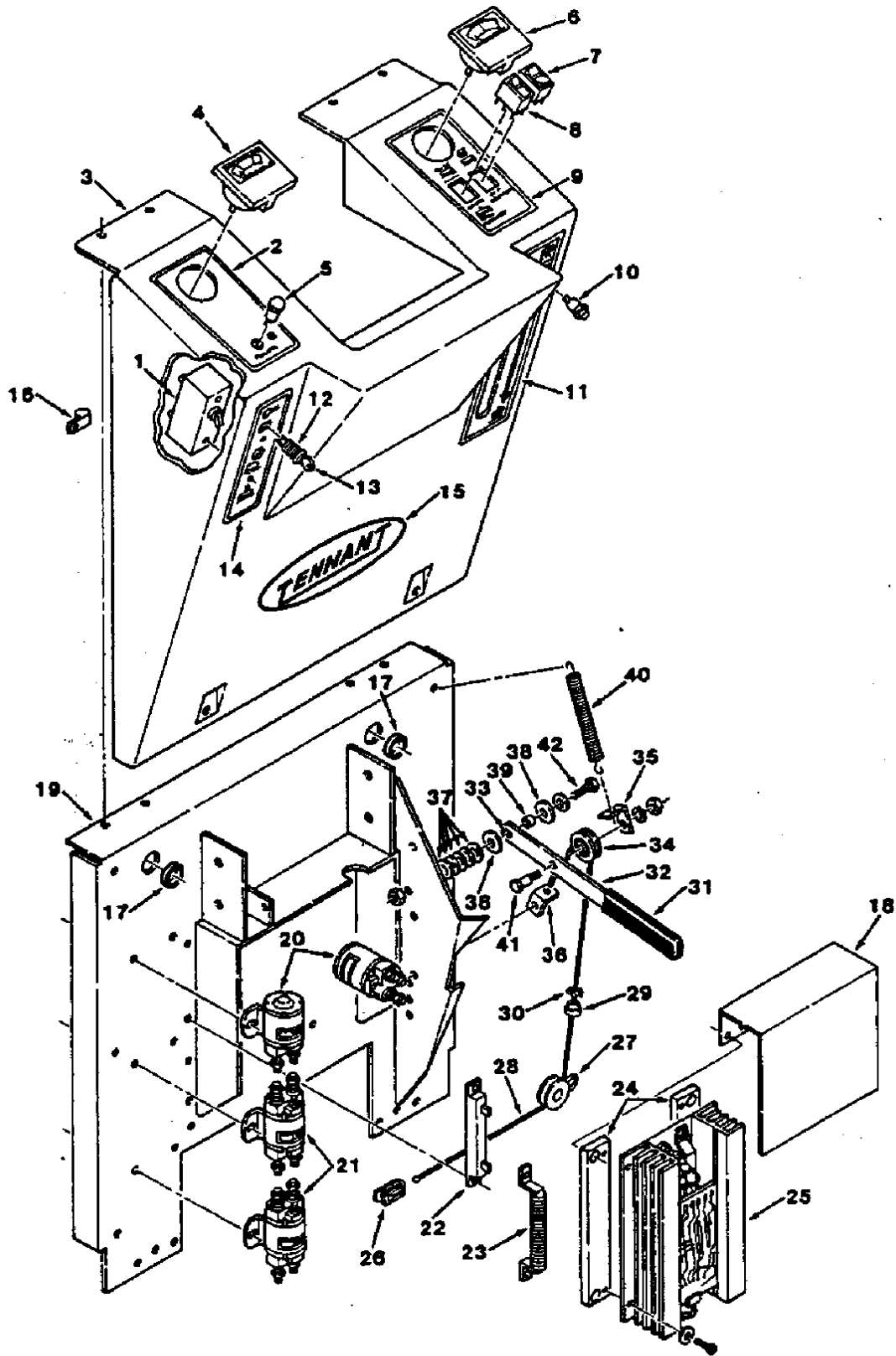


FIG. 8 - REAR PANEL GROUP

01402

KEY	TENNANT® PART NO.	MACHINE SERIAL NUMBER	DESCRIPTION	QTY.
1	89088	(-)	SWITCH, Fan	1
2	89401	(-)	DECAL, Battery condition	1
3	89361	(-)	SHROUD, Rear	1
4	89624	(-)	METER, Volt	1
5	89060	(-)	LIGHT, Pilot	1
6	89634	(-)	AMMETER	1
7	89711	(-)	SWITCH, Rocker	1
8	89110	(-)	SWITCH, Rocker	1
9	89398	(-)	DECAL, Brush control	1
10	89242	(-)	SWITCH, Push button	1
11	89346	(-)	DECAL, Squeegee lever	1
12	89538	(-)	SWITCH KIT, Keylock	1
13	89566	(-)	KEY, Switch	1
14	89119	(-)	DECAL, Power	1
15	89609	(-)	DECAL, TENNANT®	1
16	89354	(-)	CLAMP, Wire	1
17	89604	(-)	GROMMET	2
18	89531	(-)	BRACKET, Shield	1
19	89530	(-)	FRAME, Rear	1
20	89617	(-)	CONTACTOR	2
21	89627	(-)	CONTACTOR	2
22	89338	(-)	RESISTOR	1
23	89721	(-)	RESISTOR	1
24	89124	(000000000-0000013490)	BLOCK, Speed control	2
25	89728	(000000000-0000013490)	POWER CONTROL	1
25	89724	(0000013491-	POWER CONTROL	1
26	89405	(-)	CLEVIS	1
27	89051	(000000000-0000011813)	SHEAVE	1
27	89661	(0000011814-	SHEAVE	1
28	89187	(-)	CABLE, Squeegee lift	1
29	89510	(-)	ROOVER, Ceramic	1
30	89064	(-)	RING, Retaining	1
31	89123	(-)	GRIP, Handle	1
32	89532	(0000011611-	ARM ASSEMBLY, Squeegee	1
32	89269	(000000000-0000011610)	ARM ASSEMBLY, Squeegee	1
33	89142	(000000000-0000011610)	BEARING, Journal	1
34	89512	(000000000-0000011431)	REPLACEMENT KIT, Pulley	1
34	89517	(0000011432-	PULLEY	1
35	89366	(-)	BRACKET, Spring	1
36	89071	(-)	BRACKET, Lift cable	1
37	89687	(-)	WASHER	5
38	89147	(000000000-0000011610)	WASHER	2
38	89533	(0000011611-	WASHER	2
39	89163	(000000000-0000011610)	SLEEVE, Bearing	1
40	89061	(000000000-0000011610)	SPRING	1
41	89518	(0000011432-	SCREW, Shoulder	1
42	89458	(000000000-0000011610)	SCREW	1
42	89534	(0000011611-	SCREW	1

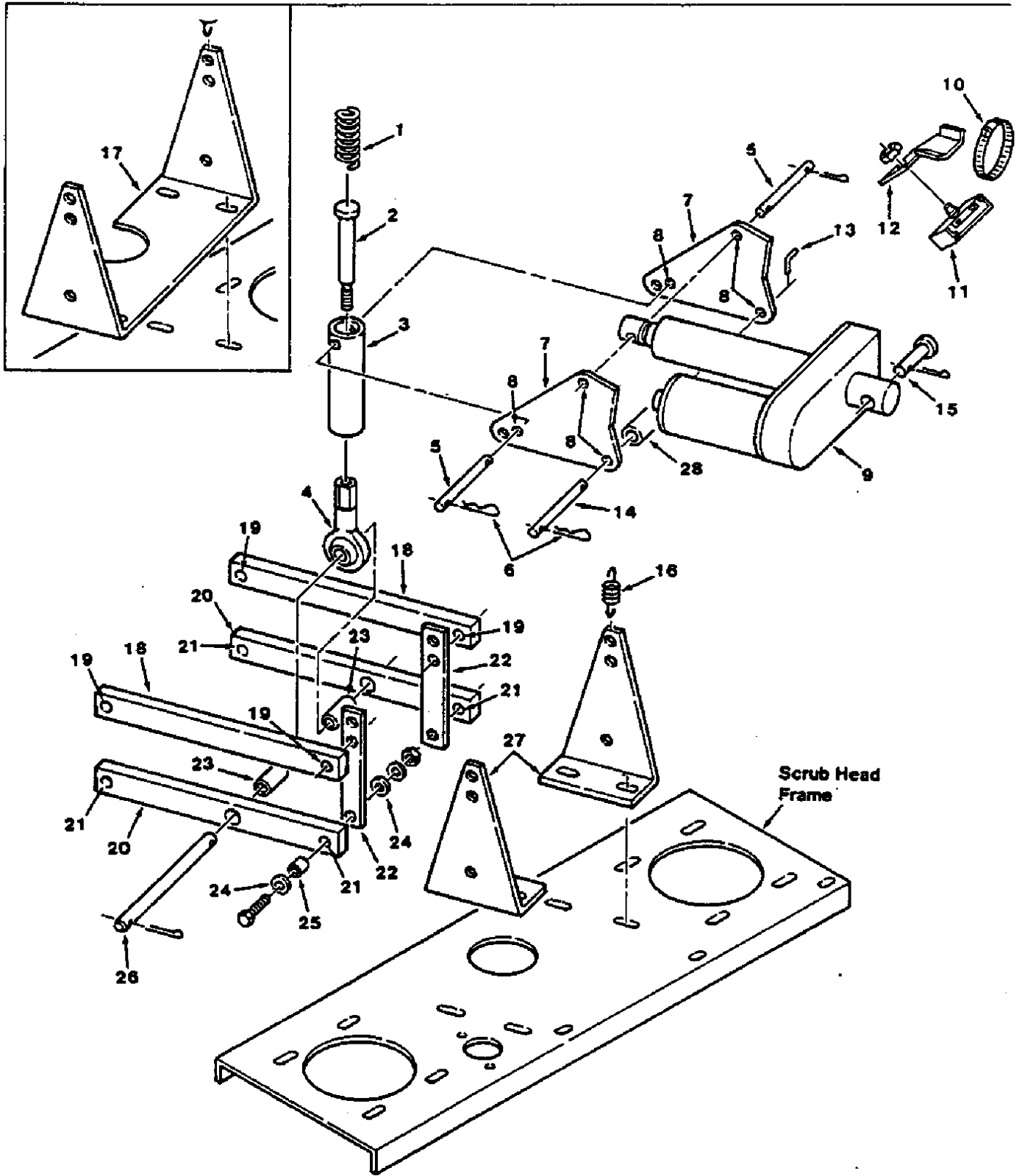


FIG. 9 - SCRUB HEAD LIFT GROUP

FIG. 9 - SCRUB HEAD LIFT GROUP

01407

KEY	TENNANT® PART NO.	MACHINE SERIAL NUMBER	DESCRIPTION	QTY.
1	89148	(-)	SPRING	1
2	89106	(-)	PLUNGER	1
3	89196	(-)	HOUSING, Spring	1
4	89158	(-)	ROD END	1
5	89160	(0000000000-0000012014)	PIN	2
5	89597	(0000012015-	PIN	2
6	89100	(-)	PIN, Hair cotter	3
7	89114	(-)	BELLCRANK ASSEMBLY	2
8	89133	(-)	BEARING, Journal	3
9	89719	(0000000000-0000013022)	ACTUATOR	1
9	89726	(0000013023-	ACTUATOR	1
10	89257	(-)	CLAMP, Hose	1
11	89423	(-)	SWITCH, Push button	1
12	89197	(-)	BRACKET, Limit switch	1
13	89130	(0000000000-xxxxxxxxxx)	PIN, L	1
14	89599	(-)	PIN	1
15	89156	(-)	PIN, Clevis	1
16	89065	(-)	SPRING	2
17	89698	(0000000000-0000012696)	BRACKET, Head lift	1
18	89266	(-)	ARM ASSEMBLY, Upper	2
19	89623	(-)	BEARING	2
20	89267	(-)	ARM ASSEMBLY, Lower	2
21	89623	(-)	BEARING	2
22	89149	(-)	STRIP, Spring mounting	2
23	89154	(-)	SPACER	2
24	89147	(-)	WASHER, Nylon	16
25	89144	(-)	SLEEVE, Bearing	8
26	89600	(-)	PIN	1
27	89667	(0000012697-	BRACKET, Head lift	2
28	89727	(0000013023-	SPACER	1

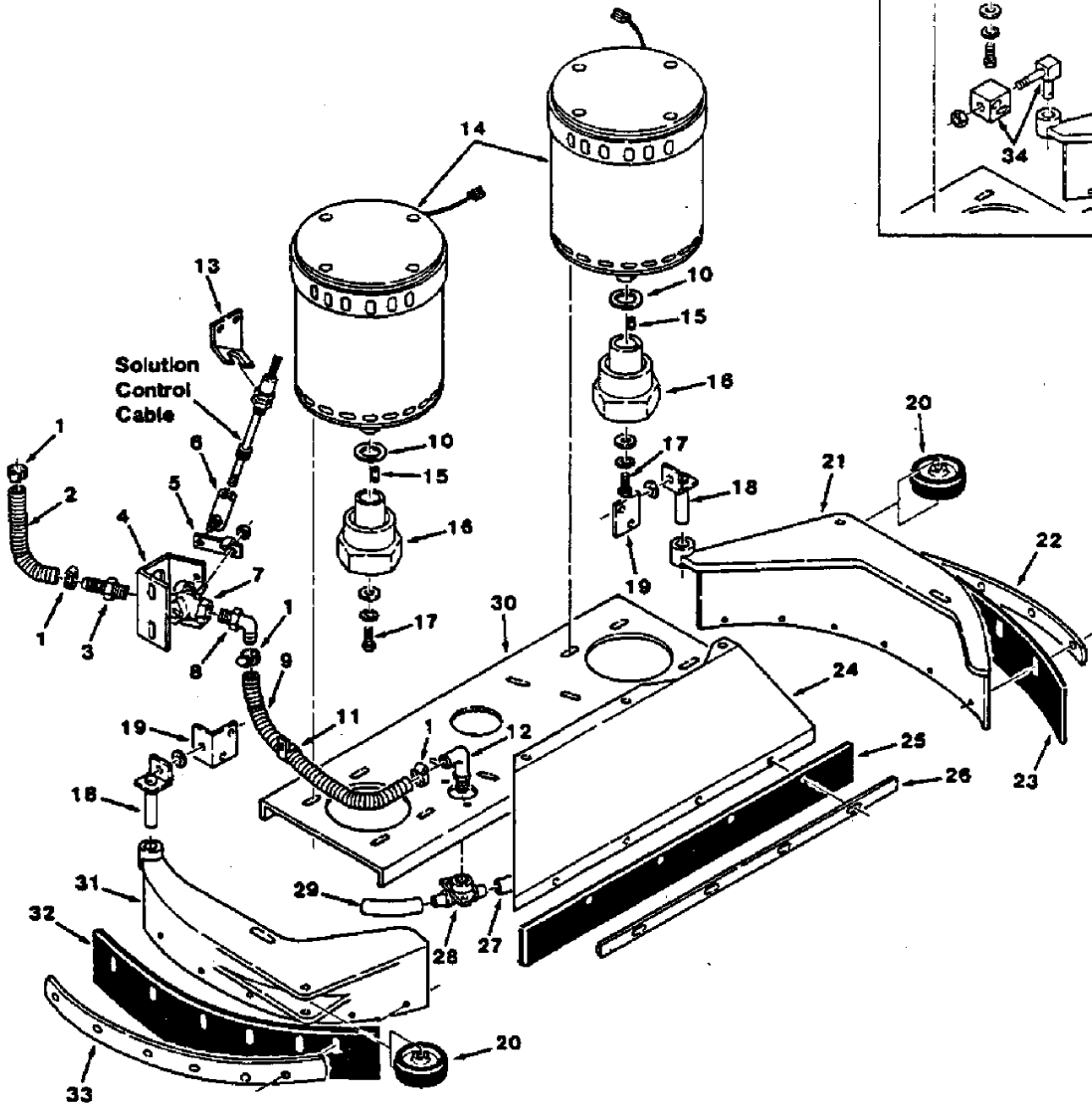


FIG. 10 - SCRUB BRUSH DRIVE GROUP

FIG. 10 - SCRUB BRUSH DRIVE GROUP

01408

KEY	TENNANT® PART NO.	MACHINE SERIAL NUMBER	DESCRIPTION	QTY.
1	89255	(-)	CLAMP, Hose	4
2	89084	(-)	HOSE	1
3	89033	(-)	CONNECTOR	1
4	89217	(-)	BRACKET, Water valve	1
5	89179	(-)	HANDLE, Water valve	1
6	89620	(-)	BALL JOINT	1
7	89214	(-)	VALVE, Water	1
8	89099	(-)	ELBOW	1
9	89132	(-)	HOSE	1
10	89140	(-)	SHIM	2
11	89062	(-)	CLAMP, Cable	1
12	89079	(-)	ELBOW	1
13	89150	(-)	BRACKET, Water valve	1
14	89631	(-)	MOTOR, Electric	2
15	89601	(-)	KEY, Square	2
16	89177	(0000000000-0000012302)	HUB, Brush	2
16	89696	(0000012303-	HUB, Brush	2
17	89443	(-)	SCREW, Socket head, stainless steel	2
18	89713	(0000012666-	JOINT, Brush cover	2
19	89712	(0000012666-	ANGLE BLOCK, Brush cover	2
20	89243	(-)	WHEEL, Rubber	2
21	89248	(-)	COVER, Brush, R.H.	1
22	89715	(-)	STRIP, Retainer, R.H.	1
23	89032	(-)	SKIRT, Brush, R.H.	1
24	89208	(-)	COVER, Brush, rear	1
25	89500	(-)	SKIRT, Scrub head cover	1
26	89501	(-)	STRAP, Scrub head cover	1
27	89172	(-)	HOSE	1
28	89078	(-)	TEE	1
29	89166	(-)	HOSE	1
30	89205	(-)	SCRUB HEAD	1
31	89249	(-)	COVER, Brush, L.H.	1
32	89033	(-)	SKIRT, Brush, L.H.	1
33	89714	(-)	STRIP, Retainer, L.H.	1
34	89716	(0000000000-0000012665)	BRUSH JOINT KIT	2

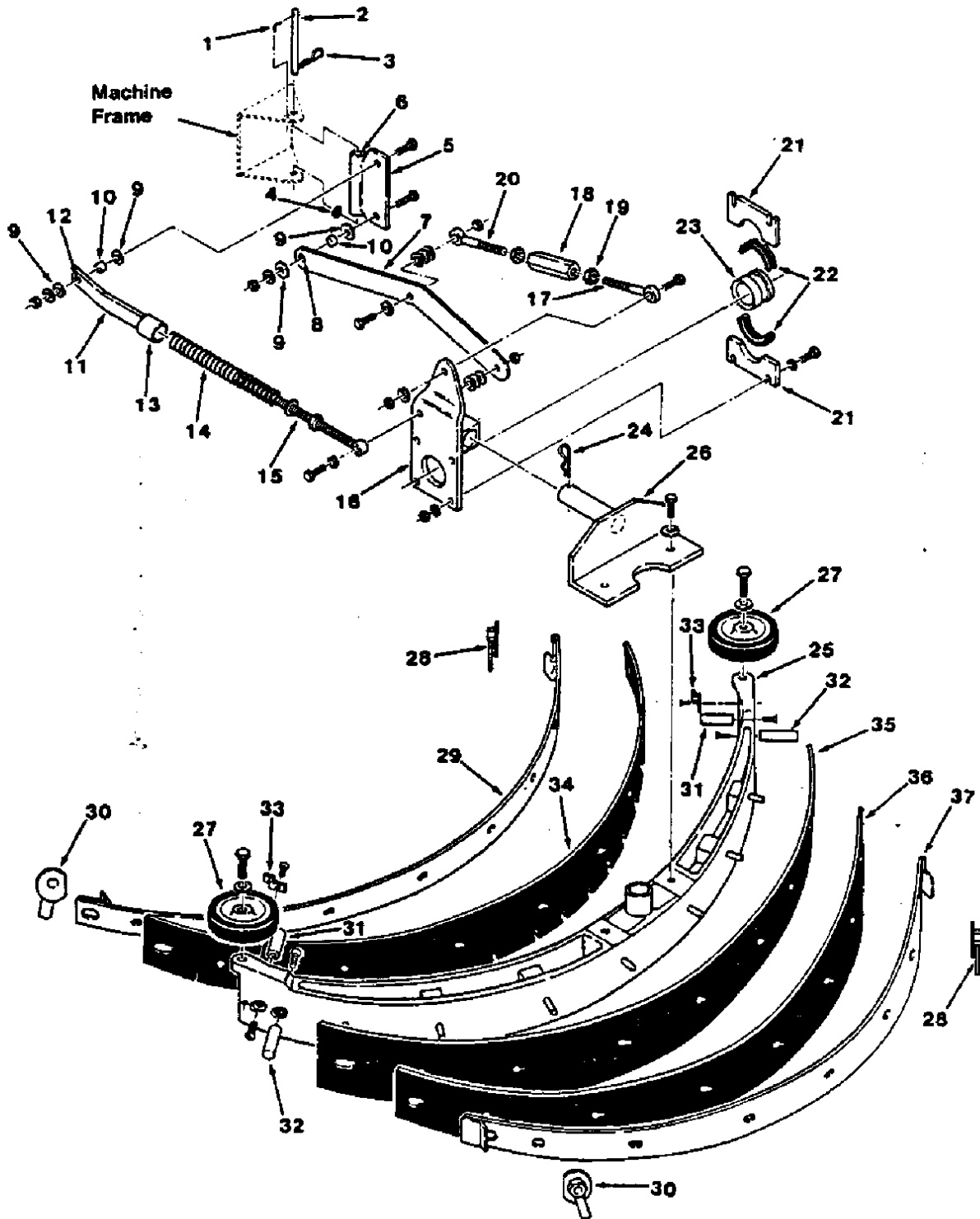


FIG. 11 - REAR SQUEEGEE GROUP

FIG. 11 - REAR SQUEEGEE GROUP

01408

KEY	TENNANT® PART NO.	MACHINE SERIAL NUMBER	DESCRIPTION	QTY.
1	89130	(0000000000-xxxxxxxxxxx)	PIN, L	1
2	89598	(-)	PIN, Squeegee pivot	1
3	89100	(-)	PIN, Hair cotter	1
4	89147	(-)	WASHER, Nylon	1
5	89264	(-)	JOINT ASSEMBLY, Swivel	1
6	89623	(-)	BEARING	1
7	89271	(-)	CONTROL ASSEMBLY, Frame	1
8	89142	(-)	BEARING, Journal	1
9	89621	(-)	BEARING, Thrust	4
10	89163	(-)	SLEEVE, Bearing	2
11	89265	(-)	ARM ASSEMBLY	1
12	89142	(-)	BEARING, Journal	1
13	89353	(-)	BEARING, Journal	1
14	89334	(-)	SPRING	1
15	89190	(-)	ROD END	1
16	89210	(-)	BRACKET, Squeegee mounting	1
17	89387	(-)	ROD END	1
18	89155	(-)	TURNBUCKLE	1
19	89244	(-)	NUT, L.H.	1
20	89073	(-)	ROD END	1
21	89168	(-)	PLATE, Guide mounting	2
22	89135	(-)	CHANNEL, Rubber	2
23	89146	(-)	GUIDE, Ceramic cable	1
24	89183	(-)	PIN, Hair cotter	1
25	89290	(-)	SQUEEGEE ASSEMBLY	1
26	89733	(-)	BRACKET, Squeegee	1
27	89539	(-)	WHEEL KIT, Rubber	2
28	89404	(-)	CAM, R.H.	2
29	89381	(-)	STRIP, Retainer	1
30	89628	(-)	CAM, L.H.	2
31	89368	(-)	STUD	2
32	89372	(-)	STUD	2
33	89374	(-)	CLIP, Squeegee	2
34	89034	(-)	BLADE, Squeegee, front	1
35	89031	(-)	BLADE, Squeegee, rear	1
36	89035	(-)	STRIP, Backup squeegee, rear	1
37	89380	(-)	STRIP, Retainer	1

SECTION 6 INDUSTRIAL MODEL PARTS

CONTENTS

	Page
Ordering Repair Parts.....	6-1
Fig. 1 - Controls Group, Industrial.....	6-2
Fig. 2 - Scrub Brush Motors Group, Industrial	6-3
Fig. 3 - Vacuum Fan Group, Industrial.....	6-4
Fig. 4 - Wraparound Bumper Assembly, Industrial	6-6

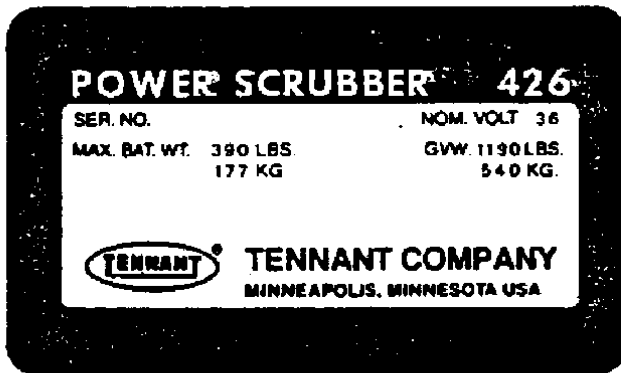
NOTE: Section 6, Industrial Model Parts, list repair parts unique to an Industrial Model 426.

ORDERING REPAIR PARTS

The components used in this machine have been carefully selected for performance and safety. Use only Tennant Company supplied or equivalent parts.

To avoid errors or delays in filling your parts orders, please furnish all of the following information.

1. Refer to Tennant Company data plate. Always specify the machine model number and the machine serial number shown on the machine data plate.



2. Give the part number, description, and the quantity needed of each item on the order. Do not order by reference number or the figure number of the illustrated parts.
3. Indented items indicate parts of assemblies. Standard hardware is furnished only when part of a purchased assembly. Please order hardware from a local hardware supplier.
4. If the old part cannot be identified, send it to us with the quantity needed specified on the order.
5. State definite shipping instructions to include the shipping address and/or the billing address if there is a difference. Any claim for loss or damage to a shipment in transit should be filed promptly against the transportation company making the delivery. Shipments will be complete unless the packing list or order acknowledgment indicate items back ordered.

If parts received are suspected to be incorrect or defective, please write, wire, or phone the Tennant Company representative from whom you ordered the part. They will give authorization for return and/or handle replacement shipments when required.

SI (INTERNATIONAL SYSTEM) UNITS OF MEASURE

Metric equivalents have been included, where applicable, throughout this parts catalog.

SERIAL NUMBER INFORMATION EXPLANATION

Serial number information is listed parenthetically to show on which machines each part can be used. These listings are explained by the following examples:

() The part can be used on all machines.

(0000001234-) The part can be used on all machines beginning with the serial number listed.

(0000000000-0000001234) The part can be used on all machines up to and including serial number listed.

(0000001234-0000005678) The part can be used on all machines between and including the serial numbers listed.

Where XXXXX's are listed in place of a serial number, it indicates a serial number change was made but the exact serial number had not been established when the catalog went to press.

(Specifications and design subject to change without notice.)

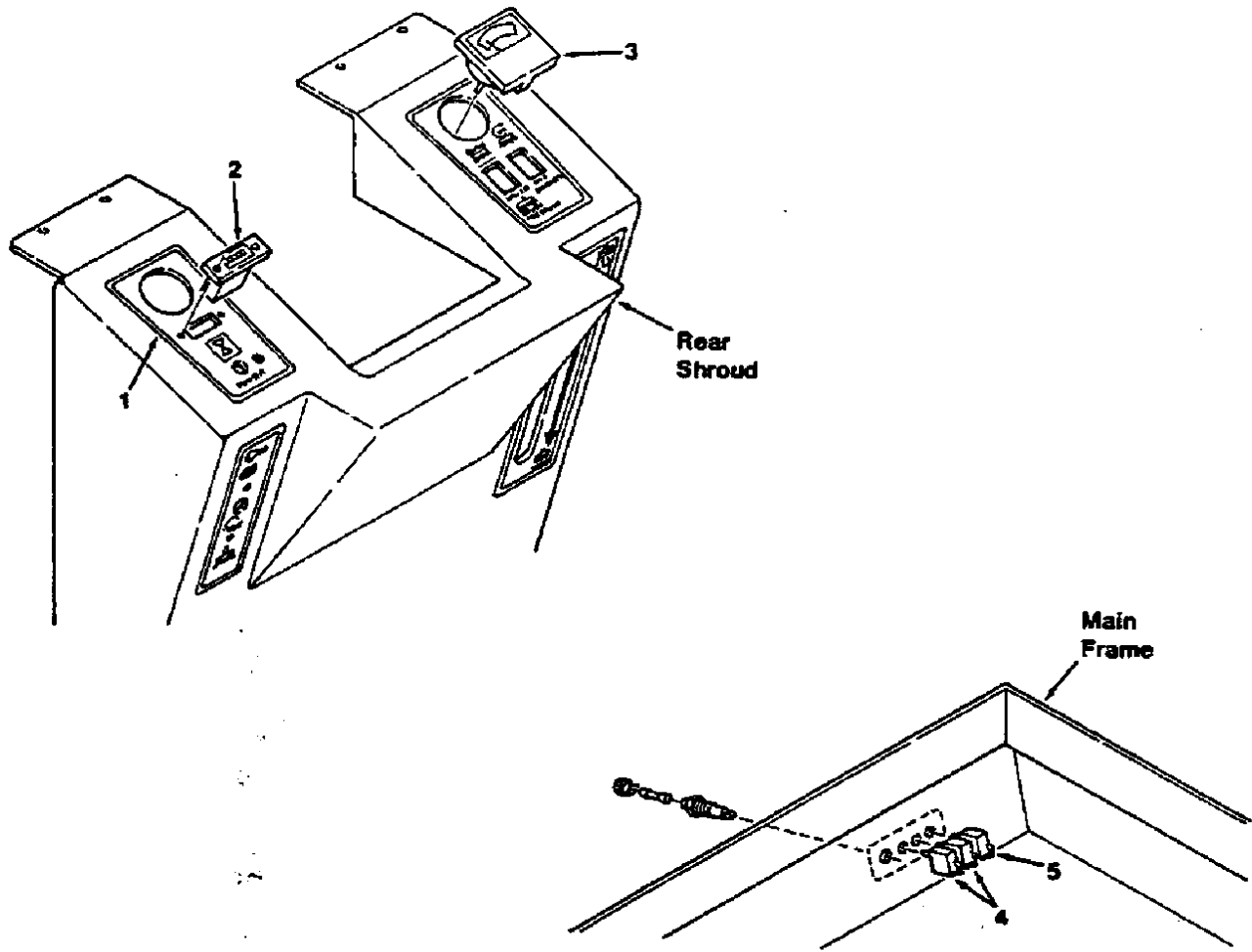


FIG. 1 - CONTROLS GROUP, INDUSTRIAL

01412

KEY	TENNANT® PART NO.	MACHINE SERIAL NUMBER	DESCRIPTION	QTY.
1	89399	(000000000-00010463HD)	DECAL, Volt meter and hour meter	1
2	89639	(000000000-00010463HD)	HOUR METER	1
3	89635	(000000000-00010463HD)	AMMETER	1
4	89150	(000000000-00010463HD)	CIRCUIT BREAKER, 25 A	2
5	89418	(000000000-00010463HD)	CIRCUIT BREAKER, 22 A	1

NOTE: To identify parts shown but not listed here, see Section 5, Standard Model Parts.

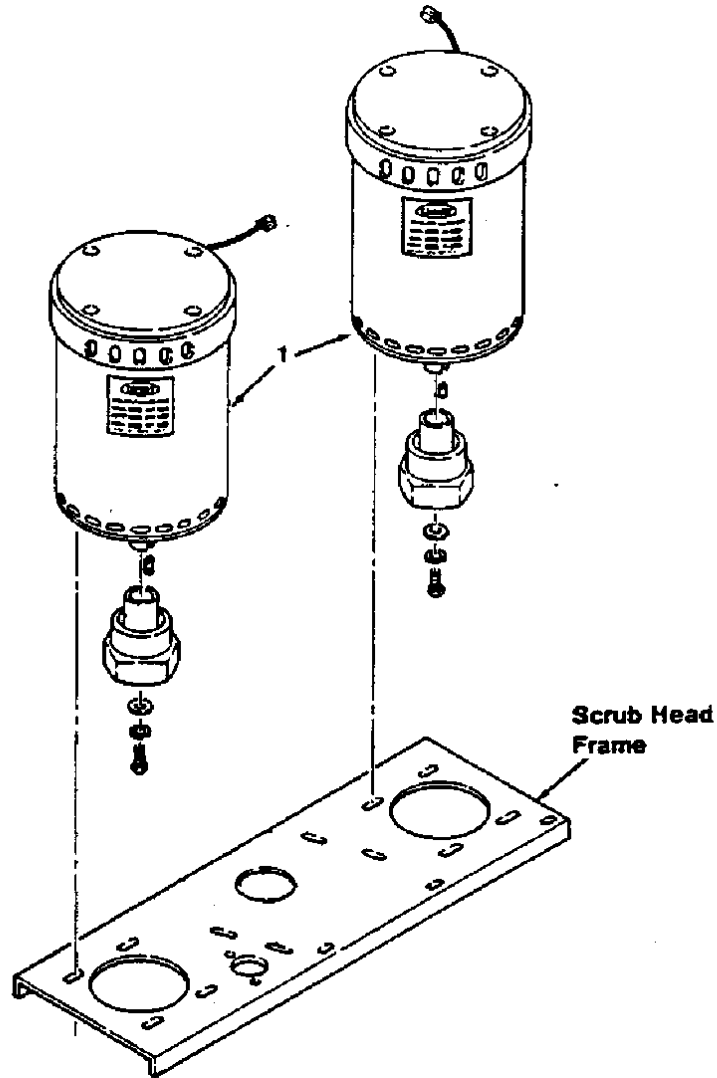


FIG. 2 - SCRUB BRUSH MOTORS GROUP, INDUSTRIAL

01411

KEY	TENNANT® PART NO.	MACHINE SERIAL NUMBER	DESCRIPTION	QTY.
1	89618	(0000000000-00010463HD)	MOTOR, Electric	2

NOTE: To identify parts shown but not listed here, see Section 5, Standard Model Parts.

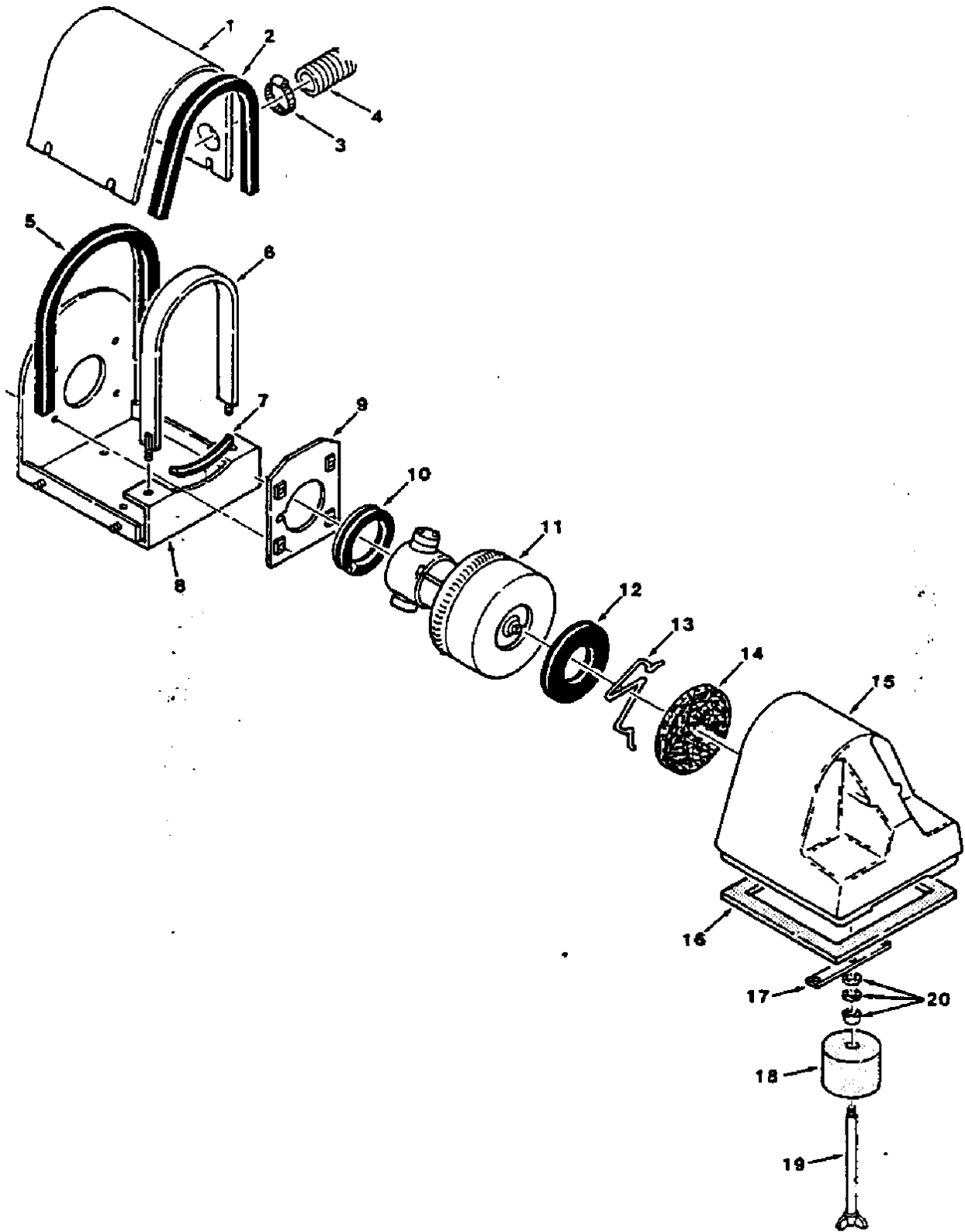


FIG. 3 - VACUUM FAN GROUP, INDUSTRIAL

FIG. 3 - VACUUM FAN GROUP, INDUSTRIAL

01413

KEY	TENNANT® PART NO.	MACHINE SERIAL NUMBER	DESCRIPTION	QTY.
1	89657	(0000000000-00010463HD)	SHROUD, Vacuum fan	1
2	89097	(0000000000-00010463HD)	STRIP, Foam	1
3	89256	(0000000000-00010463HD)	CLAMP, Hose	1
4	89096	(0000000000-00010463HD)	HOSE, Exhaust	1
5	89118	(0000000000-00010463HD)	EXTRUSION, Rubber	1
6	89103	(0000000000-00010463HD)	STRAP, Vacuum fan	1
7	89116	(0000000000-00010463HD)	EXTRUSION, Rubber	1
8	89237	(0000000000-00010463HD)	BRACKET, Fan mounting	1
9	89222	(0000000000-00010463HD)	PLATE	1
10	89117	(0000000000-00010463HD)	EXTRUSION, Rubber	1
11	89025	(0000000000-00010463HD)	FAN ASSEMBLY, Vacuum	1
	32324	(0000000000-00010463HD)	REPAIR KIT, Motor brushes	1
12	89024	(0000000000-00010463HD)	SEAL, Vacuum fan	1
13	89111	(0000000000-00010463HD)	SPRING, Filter	1
14	89394	(0000000000-00010463HD)	FILTER, Vacuum fan	1
15	89128	(0000000000-00010463HD)	ADAPTOR, Recovery tank	1
16	89102	(0000000000-00010463HD)	GASKET, Adaptor	1
17	89075	(0000000000-00010463HD)	STRIP, Stem mounting	1
18	89316	(0000000000-00010463HD)	FLOAT	1
19	89317	(0000000000-00010463HD)	GUIDE, Float	1
20	89505	(0000000000-00010463HD)	SEAL KIT, Fan	1

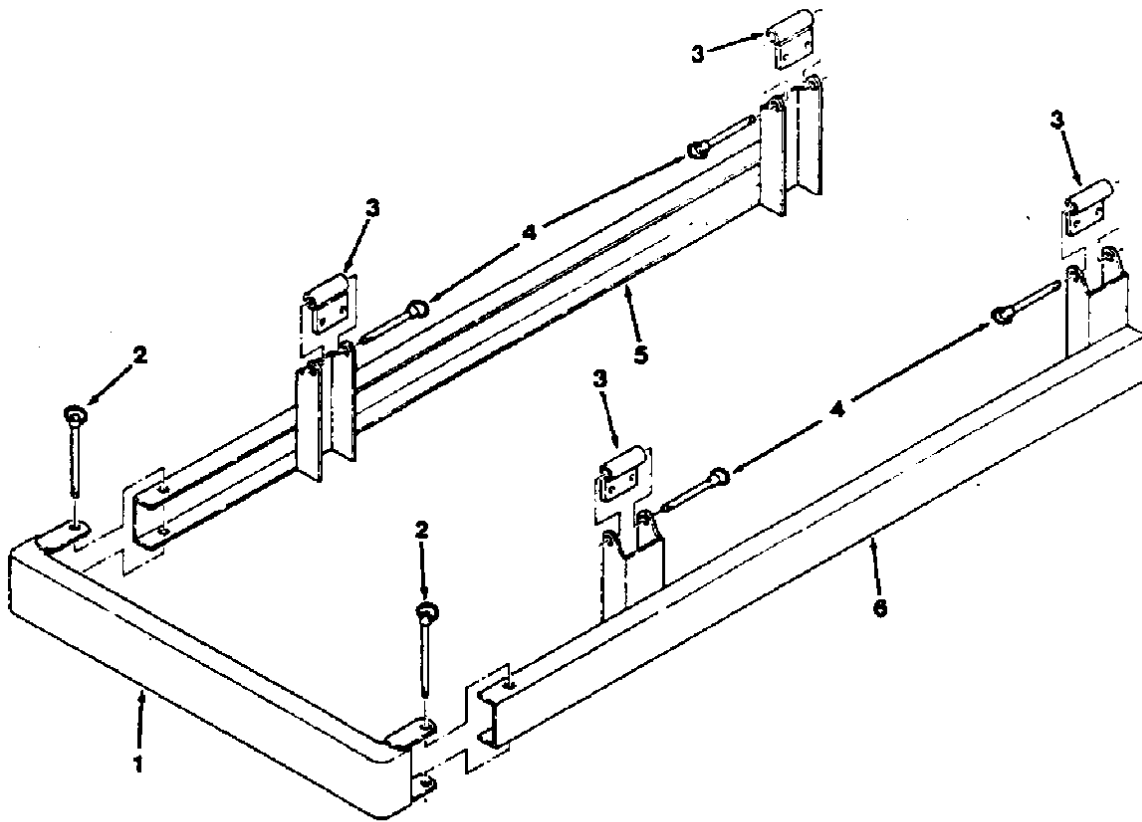


FIG. 4 - WRAPAROUND BUMPER ASSEMBLY

01400

KEY	TENNANT® PART NO.	MACHINE SERIAL NUMBER	DESCRIPTION	QTY.
	89027	(000000000-00010463HD)	WRAPAROUND BUMPER ASSEMBLY	1
1	89021	(000000000-00010463HD)	CHANNEL, Front	1
2	89645	(000000000-00010463HD)	PIN, Pivot	2
3	89644	(000000000-00010463HD)	BRACKET, Mounting	4
4	89643	(000000000-00010463HD)	PIN, Detent	4
5	89642	(000000000-00010463HD)	CHANNEL, R.H.	1
6	89641	(000000000-00010463HD)	CHANNEL, L.H.	1

SECTION 7 ACCESSORIES

CONTENTS

	Page
Ordering Repair Parts.....	7-1
Fig. 1 - Foam Tire and Rim Kit.....	7-2
Fig. 2 - Dry Batteries	7-2
Fig. 3 - 50 HZ Battery Charger.....	7-3
Fig. 4 - Vacuum Wand Kit.....	7-4
Fig. 5 - Wraparound Bumper Kit.....	7-5
Fig. 6 - Heavy Duty Group	7-6
Fig. 7 - Battery Tray Kit.....	7-8
Fig. 8 - Parking Brake Group	7-9

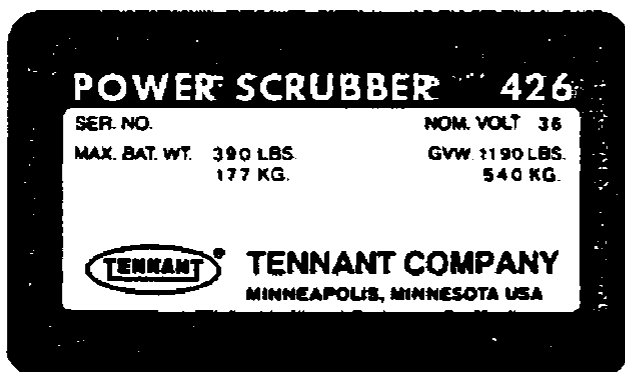
NOTE: Section 7, Accessories, lists repair parts included as part of the available accessories.

ORDERING REPAIR PARTS

The components used in this machine have been carefully selected for performance and safety. Use only Tennant Company supplied or equivalent parts.

To avoid errors or delays in filling your parts orders, please furnish all of the following information.

1. Refer to Tennant Company data plate. Always specify the machine model number and the machine serial number shown on the machine data plate.



2. Give the part number, description, and the quantity needed of each item on the order. Do not order by reference number or the figure number of the illustrated parts.
3. Indented items indicate parts of assemblies. Standard hardware is furnished only when part of a purchased assembly. Please order hardware from a local hardware supplier.
4. If the old part cannot be identified, send it to us with the quantity needed specified on the order.
5. State definite shipping instructions to include the shipping address and/or the billing address if there is a difference. Any claim for loss or damage to a shipment in transit should be filed promptly against the transportation company making the delivery. Shipments will be complete unless the packing list or order acknowledgement indicate items back ordered.

If parts received are suspected to be incorrect or defective, please write, wire, or phone the Tennant Company representative from whom you ordered the part. They will give authorization for return and/or handle replacement shipments when required.

SI (INTERNATIONAL SYSTEM) UNITS OF MEASURE

Metric equivalents have been included, where applicable, throughout this parts catalog.

SERIAL NUMBER INFORMATION EXPLANATION

Serial number information is listed parenthetically to show on which machines each part can be used. These listings are explained by the following examples:

() The part can be used on all machines.

(0000001234-) The part can be used on all machines beginning with the serial number listed.

(0000000000-0000001234) The part can be used on all machines up to and including serial number listed.

(0000001234-0000005678) The part can be used on all machines between and including the serial numbers listed.

Where XXXXX's are listed in place of a serial number, it indicates a serial number change was made but the exact serial number had not been established when the catalog went to press.

(Specifications and design subject to change without notice.)

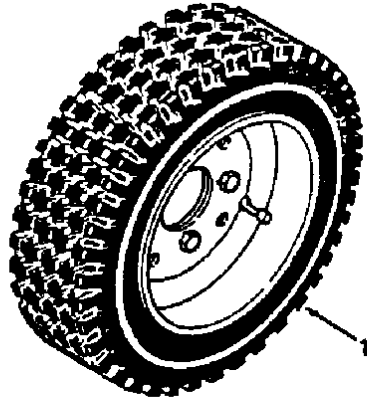


FIG. 1 - TIRE AND RIM KIT, FOAM FILLED

03871

KEY	TENNANT® PART NO.	MACHINE SERIAL NUMBER	DESCRIPTION	QTY.
1	03853	(-)	TIRE AND RIM KIT, Foam filled	1
	03847	(-)	TIRE AND RIM ASSEMBLY, Foam filled	2

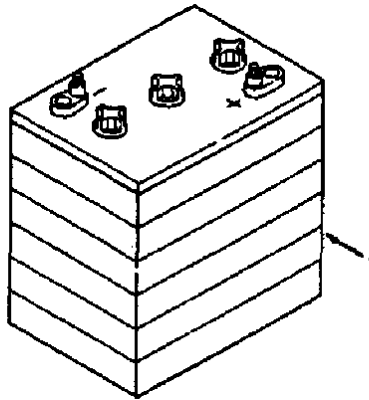


FIG. 2 - BATTERY KIT, DRY

01397

KEY	TENNANT® PART NO.	MACHINE SERIAL NUMBER	DESCRIPTION	QTY.
1	10156	(-)	BATTERY, 220 A/H, 6 V, dry	6

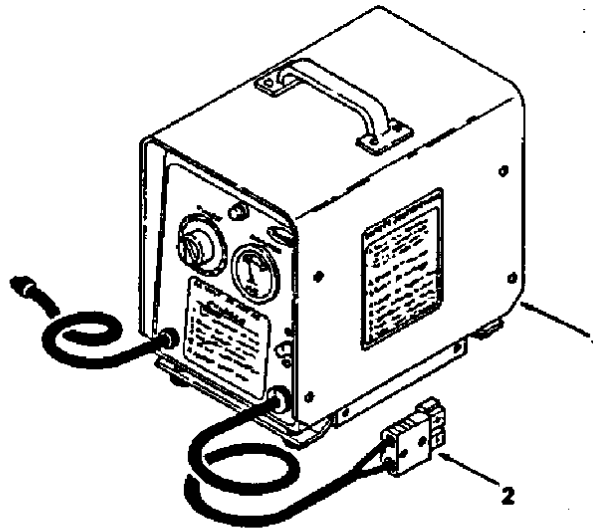


FIG. 3 - BATTERY CHARGER KIT, 50 HZ

01388

KEY	TENNANT® PART NO.	MACHINE SERIAL NUMBER	DESCRIPTION	QTY.
1	63344	(-)	CHARGER, Battery, 50 HZ	1
2	89647	(-)	CONNECTOR	1

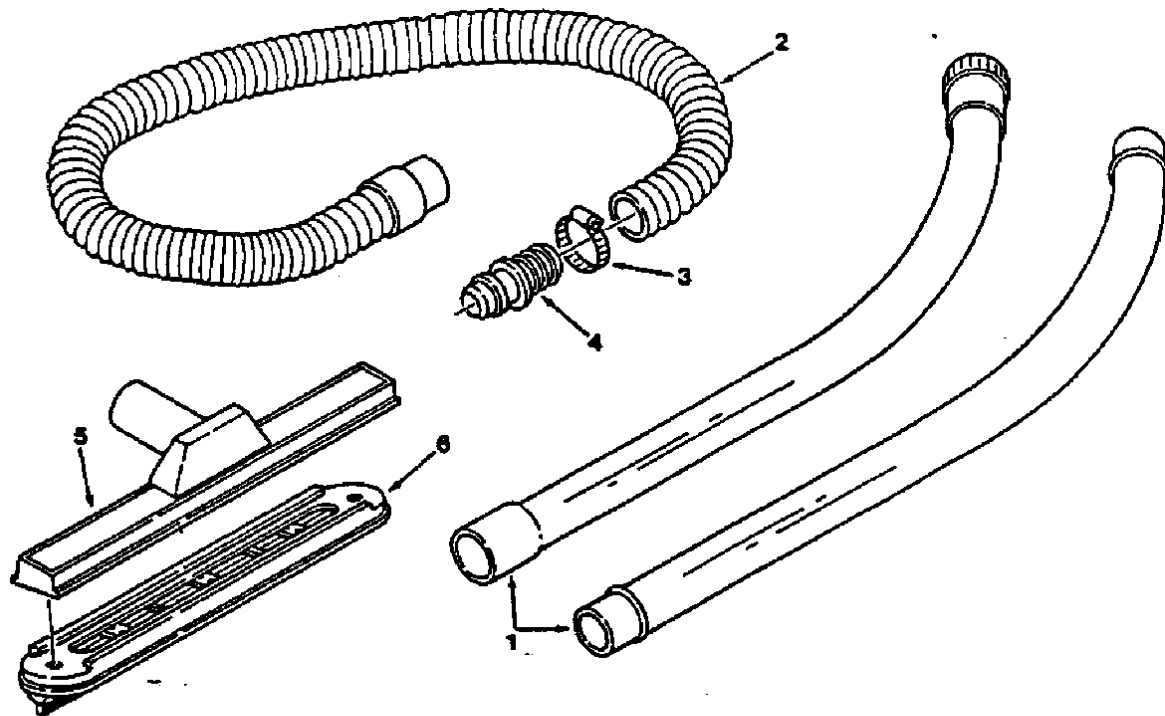


FIG. 4 - VACUUM WAND KIT

01381

KEY	TENNANT® PART NO.	MACHINE SERIAL NUMBER	DESCRIPTION	QTY.
	89028	(-)	VACUUM WAND KIT	1
1	89648	(-)	WAND, Metal	1
2	89649	(-)	HOSE AND CUFF ASSEMBLY	1
3	89650	(-)	CLAMP, Worm drive	1
4	89729	(-)	COUPLING, Hose	1
5	89652	(-)	NOZZLE, Wand	1
6	89653	(-)	SHOE, Squeegee	1

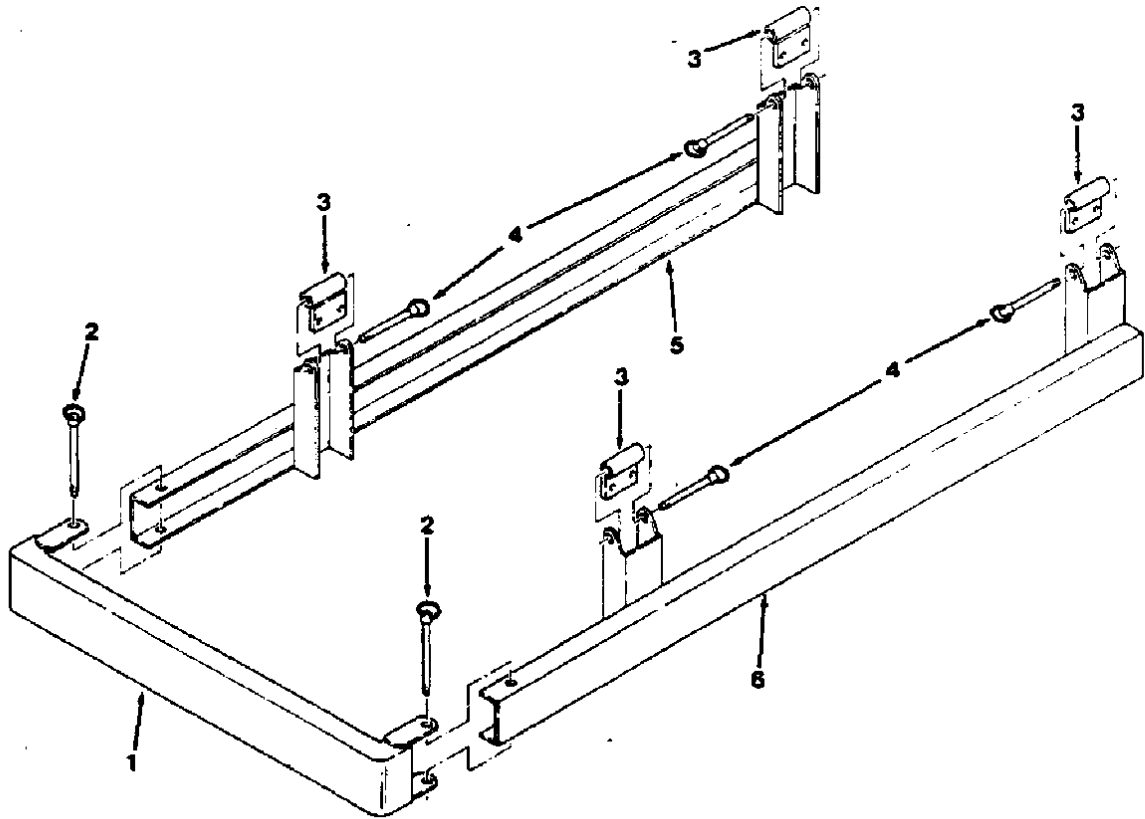


FIG. 5 - WRAPAROUND BUMPER KIT

01400

KEY	TENNANT® PART NO.	MACHINE SERIAL NUMBER	DESCRIPTION	QTY.
	89027	(-)	WRAPAROUND BUMPER KIT	1
1	89021	(-)	CHANNEL, Front	1
2	89645	(-)	PIN, Pivot	2
3	89644	(-)	BRACKET, Mounting	4
4	89643	(-)	PIN, Detent	4
5	89642	(-)	CHANNEL, R.H.	1
6	89641	(-)	CHANNEL, L.H.	1

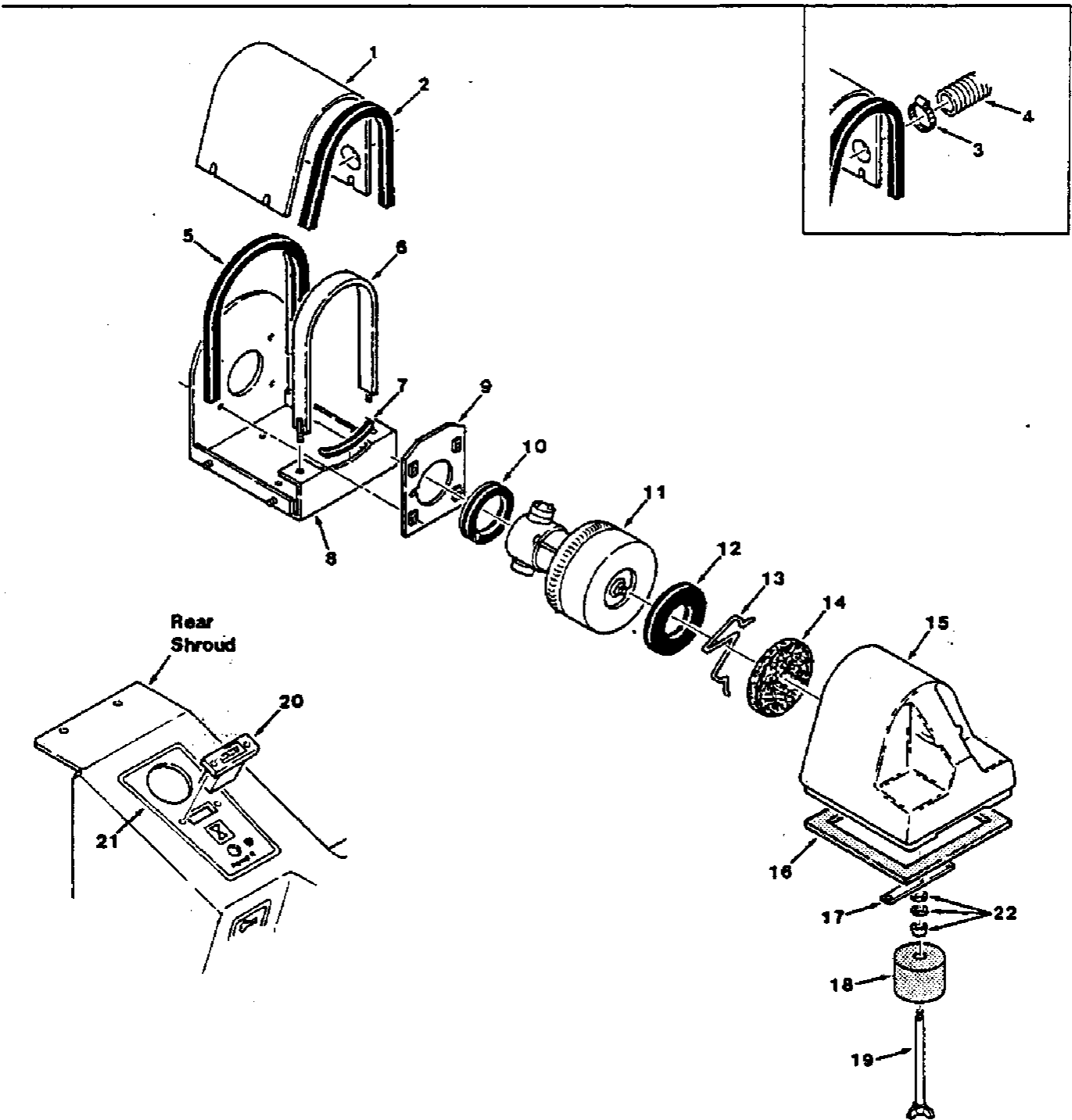


FIG. 6 - HEAVY DUTY FAN GROUP

NOTE: To identify parts shown but not listed here, see Section 5, Standard Model Parts.

FIG. 6 - HEAVY DUTY FAN GROUP

02115

KEY	TENNANT® PART NO.	MACHINE SERIAL NUMBER	DESCRIPTION	QTY.
1	89657	(0010464HDF-)	SHROUD, Vacuum fan	1
2	89097	(0010464HDF-)	STRIP, Foam	1
3	89256	(0000000000-0011929HDF)	CLAMP, Hose	1
4	89096	(0000000000-0011929HDF)	HOSE, Exhaust	1
5	89118	(0010464HDF-)	EXTRUSION, Rubber	1
6	89103	(0010464HDF-)	STRAP, Vacuum fan	1
7	89116	(0010464HDF-)	EXTRUSION, Rubber	1
8	89237	(0010464HDF-)	BRACKET, Fan mounting	1
9	89222	(0010464HDF-)	PLATE	1
10	89117	(0010464HDF-)	EXTRUSION, Rubber	1
11	89025	(0010464HDF-)	FAN ASSEMBLY, Vacuum	1
12	89024	(0010464HDF-)	SEAL, Vacuum fan	1
13	89111	(0010464HDF-)	SPRING, Filter	1
14	89394	(0010464HDF-)	FILTER, Vacuum fan	1
15	89128	(0010464HDF-)	ADAPTOR, Recovery tank	1
16	89102	(0010464HDF-)	GASKET, Adaptor	1
17	89075	(0010464HDF-)	STRIP, Stem mounting	1
18	89316	(0010464HDF-)	FLOAT	1
19	89317	(0010464HDF-)	GUIDE, Float	1
20	89639	(0010464HDF-)	HOUR METER	1
21	89399	(0010464HDF-)	DECAL, Voltmeter and hour meter	1
22	89505	(0010464HDF-)	SEAL KIT, Fan	1

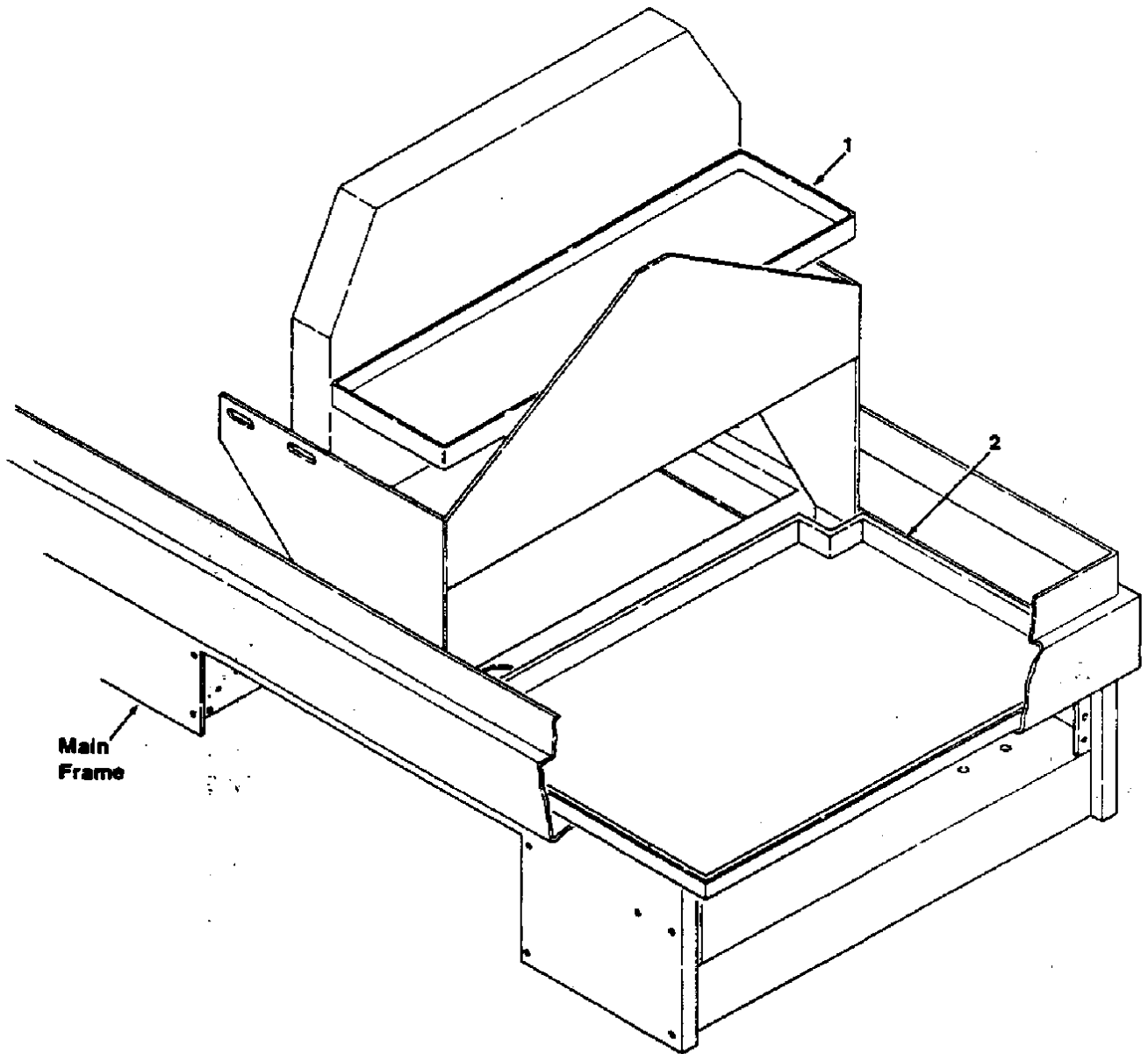


FIG. 7 - BATTERY TRAY KIT

02647

KEY	TENNANT® PART NO.	MACHINE SERIAL NUMBER	DESCRIPTION	QTY.
-	89536	(-)	BATTERY TRAY KIT	1
1	89687	(-)	TRAY, Upper	1
2	89688	(-)	TRAY, Lower	1

NOTE: To identify parts shown but not listed here, see Section 5, Standard Model Parts.

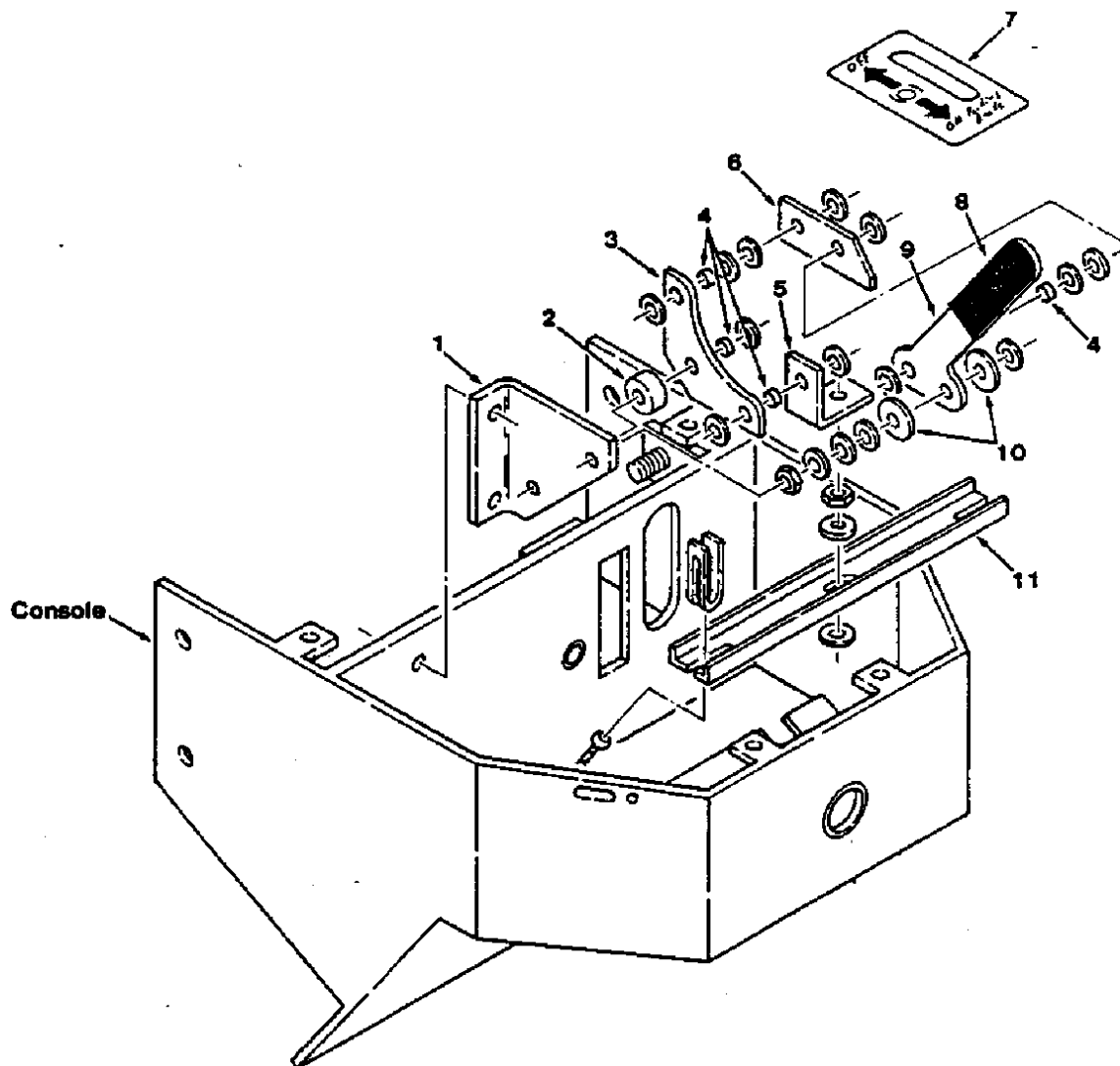


FIG. 8 - PARKING BRAKE GROUP

02848

KEY	TENNANT® PART NO.	MACHINE SERIAL NUMBER	DESCRIPTION	QTY.
1	89678	(-)	BRACKET, Parking brake	1
2	89681	(-)	SPACER	1
3	89676	(-)	BELLCRANK, Parking brake	1
4	89690	(-)	SLEEVE	4
5	89679	(-)	ANGLE, Parking brake	1
6	89677	(-)	LINK, Parking brake	1
7	89683	(-)	DECAL, Parking brake	1
8	89691	(-)	GRIP, Handle	1
9	89680	(-)	HANDLE, Parking brake	1
10	89533	(-)	WASHER, Nylon	2
11	89674	(-)	CHANNEL, Parking brake	1

NOTE: To identify parts shown but not listed here, see Section 5, Standard Model Parts.



SECTION 8

ELECTRICAL COMPONENTS

CONTENTS

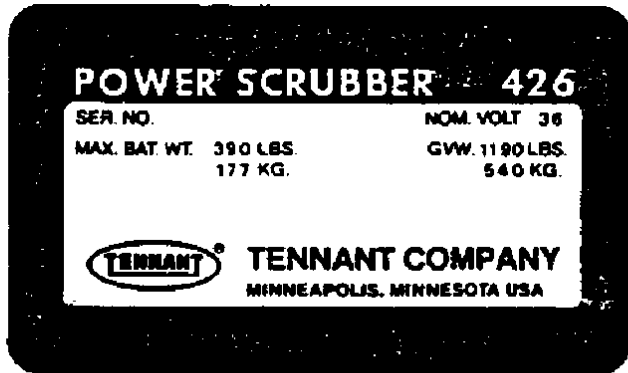
	Page
Ordering Repair Parts.....	8-1
Fig. 1 - Vacuum Fan Motor Breakdown.....	8-2
Fig. 2 - Vacuum Fan Motor Breakdown, Heavy Duty.....	8-4
Fig. 3 - Scrub Brush Motor Breakdown.....	8-6
Fig. 4 - Scrub Brush Motor Breakdown, Heavy Duty.....	8-7



ORDERING REPAIR PARTS

To avoid errors or delays in filling parts orders, please furnish all of the following information.

1. Always specify the machine model number and the machine serial number shown on the machine data plate.



2. Give the part number, description, and the quantity needed of each item on the order. Do not order by reference number or the figure number of the illustrated parts.
3. Indented items indicate parts of assemblies. Standard hardware is furnished only when part of a purchased assembly. Please order hardware from a local hardware supplier.
4. If the old part cannot be identified, send it to us with the quantity needed specified on the order.
5. State definite shipping instructions to include the shipping address and/or the billing address if there is a difference. Any claim for loss or damage to a shipment in transit should be filed promptly against the transportation company making the delivery. Shipments will be complete unless the packing list or order acknowledgement indicate items back ordered.

If parts received are suspected to be incorrect or defective, please write, wire, or phone the Tennant Company representative from whom you ordered the part. They will give authorization for return and/or handle replacement shipments when required.

SI (INTERNATIONAL SYSTEM) UNITS OF MEASURE

Metric equivalents have been included, where applicable, throughout this parts catalog.

BOLT AND CAP SCREW STRENGTH IDENTIFICATION

Bolts and cap screws required to have high-strength qualities equivalent to SAE Grade 8 are identified throughout this catalog by the description GR 8. Unless identified by this description, all standard bolts and cap screws are SAE Grade 5.

SERIAL NUMBER INFORMATION EXPLANATION

Serial number information is listed parenthetically to show on which machines each part can be used. These listings are explained by the following examples:

() The part can be used on all machines.

(0000001234-) The part can be used on all machines beginning with the serial number listed.

(0000000000-0000001234) The part can be used on all machines up to and including serial number listed.

(0000001234-0000005678) The part can be used on all machines between and including the serial numbers listed.

Where XXXXX's are listed in place of a serial number, it indicates a serial number change was made but the exact serial number had not been established when the catalog went to press.

(Specifications and design subject to change without notice.)

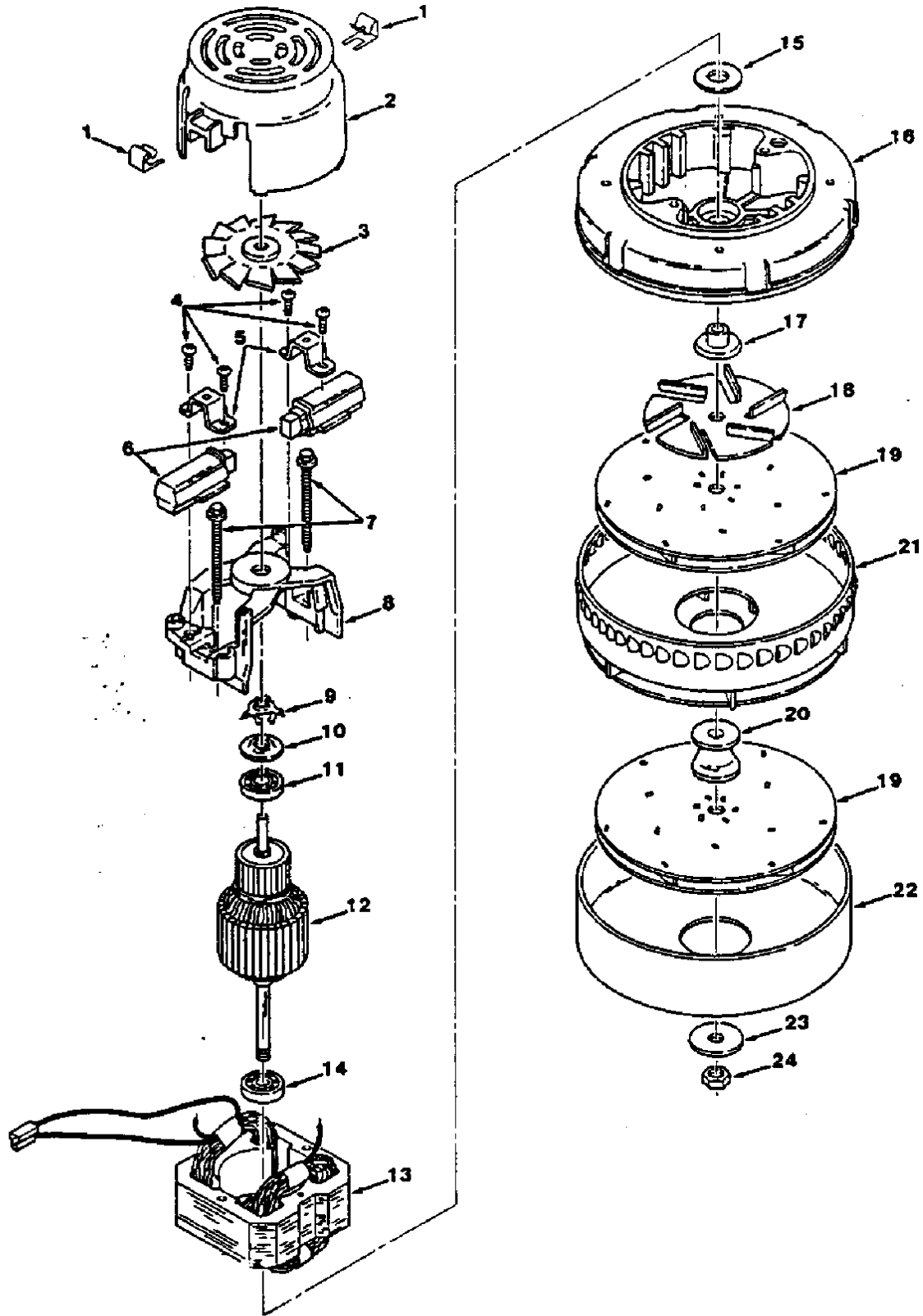


FIG. 1 - VACUUM FAN MOTOR BREAKDOWN

FIG. 1 - VACUUM FAN MOTOR BREAKDOWN

02118

KEY	TENNANT® PART NO.	MACHINE SERIAL NUMBER	DESCRIPTION	QTY.
	89622	(-)	FAN, Vacuum	1
1	01967	(-)	CLIP	2
2	37926	(-)	HOUSING	1
3	37923	(-)	FAN	1
4	01968	(-)	SCREW	4
5	01982	(-)	CLAMP	2
6	32323	(-)	BRUSH	2
7	01969	(-)	SCREW	2
8	01983	(-)	BRACKET	1
9	01856	(-)	SPRING	1
10	37909	(-)	DISC	1
11	01842	(-)	BEARING	1
12	18633	(-)	ARMATURE	1
13	37924	(-)	FIELD	1
14	01837	(-)	BEARING	1
15	37912	(-)	WASHER	1
16	01970	(-)	BRACKET	1
17	18627	(-)	SPACER	1
18	01971	(-)	FAN	1
19	18628	(-)	FAN, Vacuum	2
20	18630	(-)	SPACER	1
21	18629	(-)	FAN, Stationary	1
22	18631	(-)	SHELL	1
23	18632	(-)	WASHER	1
24	37929	(-)	NUT	1

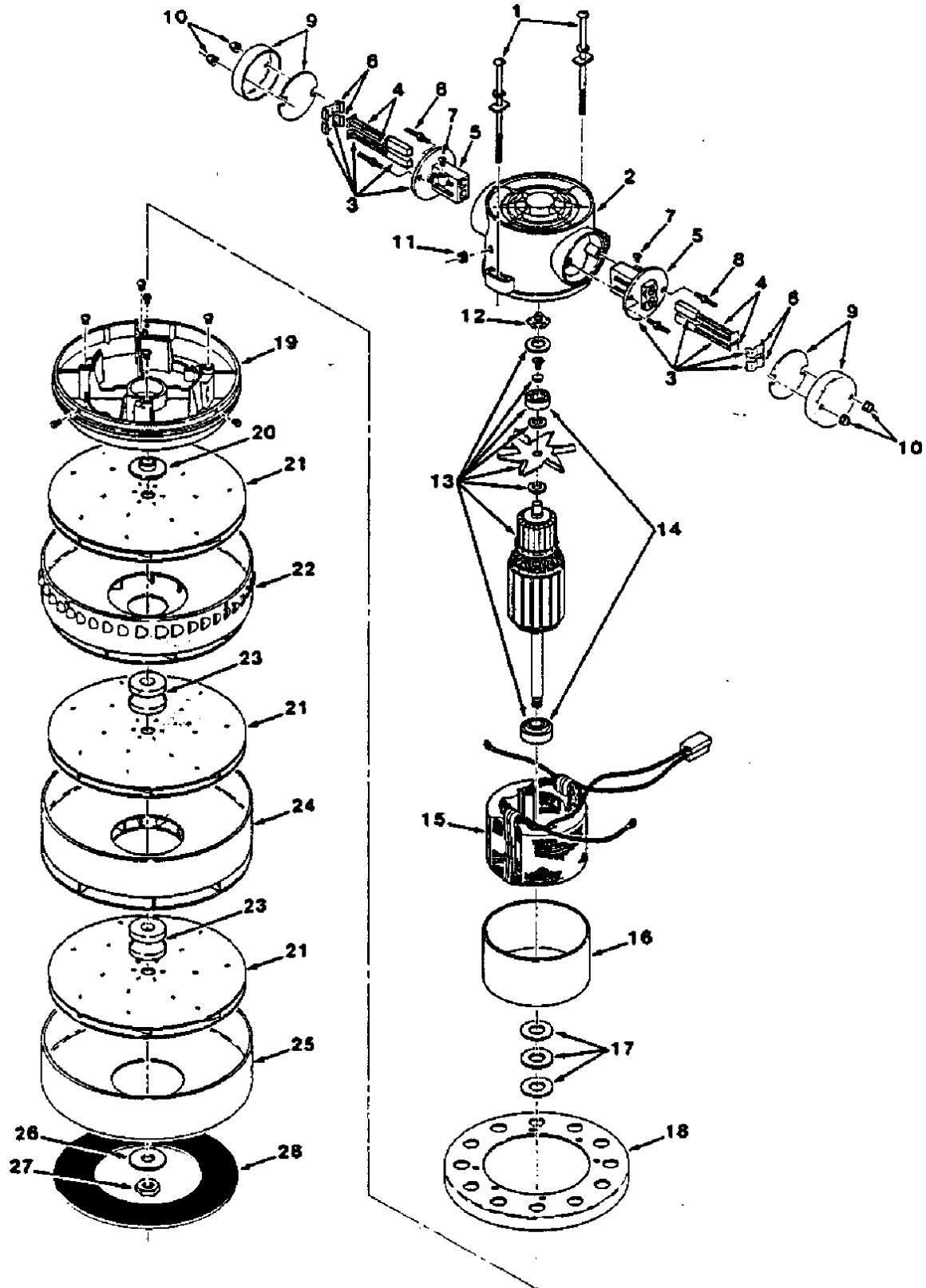


FIG. 2 - VACUUM FAN MOTOR BREAKDOWN, HEAVY DUTY

FIG. 2 - VACUUM FAN MOTOR BREAKDOWN, HEAVY DUTY

02119

KEY	TENNANT® PART NO.	MACHINE SERIAL NUMBER	DESCRIPTION	QTY.
	89425	(-)	FAN ASSEMBLY, Vacuum, heavy duty	1
1	01981	(-)	SCREW	2
2	01848	(-)	BRACKET	1
3	32324	(-)	BRUSH ASSEMBLY	2
4	37925	(-)	BRUSH AND SPRING	2
5	01972	(-)	HOLDER, Brush	1
6	01973	(-)	CLIP, Brush assembly	2
7	38303	(-)	SCREW	2
8	01974	(-)	STUD	4
9	38327	(-)	CAP	2
10	01975	(-)	NUT	4
11	01976	(-)	BUSHING	1
12	01856	(-)	SPRING	1
13	01841	(-)	ARMATURE	1
14	38438	(-)	BEARING KIT	1
15	01978	(-)	FIELD	1
16	01979	(-)	BAND	1
17	01980	(-)	WASHER	3
18	38362	(-)	SHELL	1
19	01854	(-)	BRACKET	1
20	45419	(-)	SPACER	1
21	45420A	(-)	FAN, Rotating	3
22	45418A	(-)	FAN, Stationary	1
23	45421	(-)	SPACER	2
24	45422A	(-)	FAN, Stationary	1
25	45424A	(-)	SHELL	1
26	45423	(-)	WASHER	1
27	37939	(-)	NUT	1
28	89024	(-)	SEAL	1

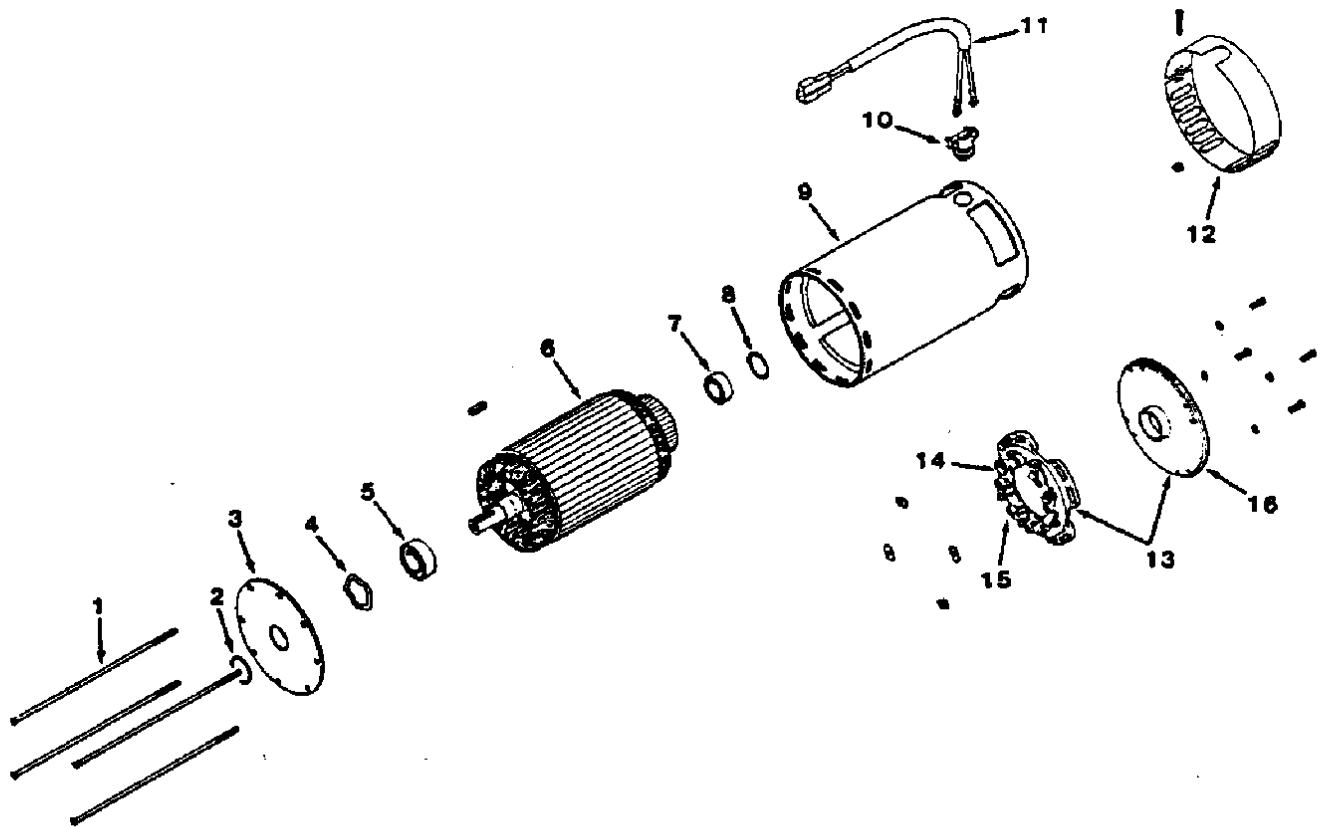


FIG. 3 - SCRUB BRUSH MOTOR BREAKDOWN

02130

KEY	TENNANT® PART NO.	MACHINE SERIAL NUMBER	DESCRIPTION	QTY.
	89631	(-)	MOTOR, Electric	1
1	37636	(-)	BOLT	4
2	37637	(-)	SEAL, Oil	1
3	37642	(-)	ENDBELL	1
4	37888	(-)	SPRING LOAD	1
5	18626	(-)	BEARING	1
6	18621	(-)	ARMATURE ASSEMBLY	1
7	38378	(-)	BEARING	1
8	38652	(-)	SPACER	1
9	18622	(-)	SHELL AND MAGNET ASSEMBLY	1
10	38468	(-)	CLAMP	1
11	38266	(-)	CORD	1
12	38639	(-)	BAND	1
13	38651	(-)	ENDBELL ASSEMBLY	1
14	37643	(-)	SPRING, Brush	4
15	37638	(-)	BRUSH ASSEMBLY	4
16	37641	(-)	ENDBELL	1

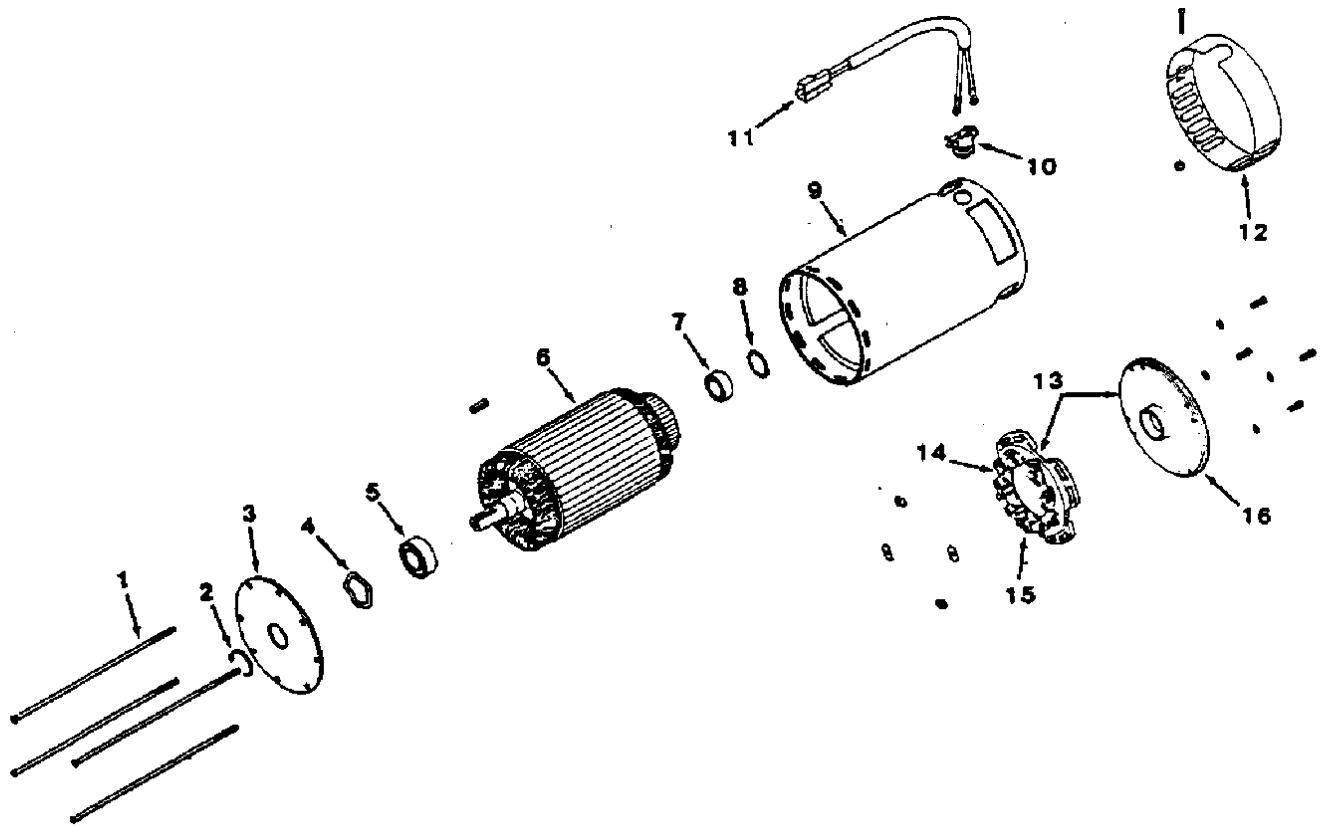


FIG. 4 - SCRUB BRUSH MOTOR BREAKDOWN, HEAVY DUTY

02121

KEY	TENNANT® PART NO.	MACHINE SERIAL NUMBER	DESCRIPTION	QTY.
	89618	(-)	MOTOR, Electric	1
1	38372	(-)	BOLT	4
2	37637	(-)	SEAL, Oil	1
3	37642	(-)	ENDBELL	1
4	37888	(-)	SPRING LOAD	1
5	18626	(-)	BEARING	1
6	18623	(-)	ARMATURE ASSEMBLY	1
7	38378	(-)	BEARING	1
8	38652	(-)	SPACER	1
9	37639	(-)	SHELL AND MAGNET ASSEMBLY	1
10	38468	(-)	CLAMP	1
11	38266	(-)	CORD	1
12	38639	(-)	BAND	1
13	38658	(-)	ENDBELL ASSEMBLY	1
14	37643	(-)	SPRING, Brush	8
15	37638	(-)	BRUSH ASSEMBLY	8
16	37641	(-)	ENDBELL	1

TENNANT COMPANY LIMITED WARRANTY

NEW MACHINES

Tennant Company warrants to the original purchaser for the period stated below that goods manufactured by it will be free from defects of workmanship and material, provided such goods are installed, operated, and maintained in accordance with Tennant Company's written manuals or other instructions. No warranty is made with respect to items supplied by Tennant Company on special order of purchaser. Tennant Company's sole obligation under this Warranty will be to repair and replace, at Tennant Company's option, parts that do not conform to this Warranty.

SIX-MONTH LABOR COVERAGE (U.S.A. AND CANADA ONLY)

For six (6) months in the U.S.A. or Canada, thirty (30) days elsewhere, from date of installation, Tennant Company will, at its option, provide labor for repair, pay for outside repair service, or pay the customer straight time in accordance with Tennant Company's flat rate schedule for particular warranty repairs. After six (6) months, Tennant Company's sole obligation shall be limited to the repair or replacement, at Tennant Company's option, of parts that do not conform to this Warranty according to the schedule below.

BATTERIES AND TIRES

Batteries and tires will be replaced if failure occurs due to defective material or workmanship within ninety (90) days from date of purchase. Thereafter, a pro rata adjustment from date of purchase to twelve (12) months will be made. The pro rata adjustment price of the replacement battery and/or tire will be the Tennant Company current price as of the adjustment request less 1/12th of that price for each month remaining in the twelve (12) month period. This Warranty applies only to batteries and tires purchased from Tennant Company and installed in vehicles used in normal service.

BRUSHES

Brushes that fail due to defective material or workmanship will be replaced on a pro rata basis within the first twelve (12) months of purchase. The replacement price will be calculated by multiplying the current Tennant Company price by the percentage of usable bristle remaining at the time of adjustment.

MACHINE WARRANTY PERIOD

Tennant Company warrants its equipment for a set number of months or for a set number of hours of use, whichever comes first. The warranty periods and hours of use vary depending upon the machine model. The warranty periods for Tennant Company's various machines are:

SCARIFIERS

Machine Model	Warranty Period	Machine Model	Warranty Period
G	12 months/500 hours	L2	12 months/500 hours
K4	12 months/500 hours	RS/TLR	12 months/500 hours
KDC	12 months/500 hours		

SCRUBBERS

Machine Model	Warranty Period	Machine Model	Warranty Period
426	12 months/500 hours	540E	12 months/1500 hours
432	12 months/500 hours	550	12 months/1500 hours
520	12 months/1500 hours	550E	12 months/1500 hours
527-II	12 months/1500 hours		
(except engine and hydraulics-24 months/2000 hours)			

SWEEPERS

Machine Model	Warranty Period	Machine Model	Warranty Period
42HD	12 months/500 hours	240	12 months/1500 hours
140	12 months/500 hours	240EH SE	24 months/1750 hours
186	18 months/500 hours	255	18 months/1500 hours
215	18 months/750 hours	275/275SE	24 months/2000 hours
220	12 months/1500 hours	365	24 months/2000 hours
235	24 months/1250 hours	92 GR	12 months/1500 hours
(except Duramerc hopper		95	24 months/2000 hours
5 years/5000 hours)		717	24 months/1500 hours

Home

Find...

Go To..



RECONDITIONED MACHINES

Tennant Company warrants to the purchaser of reconditioned equipment, purchased from Tennant Company, for the period of ninety (90) days from the date of delivery that the purchased equipment will be free from defects of workmanship and material, provided such equipment is operated and maintained according to Tennant Company written manuals or instructions. Tennant Company's sole obligation under this Warranty will be to repair and replace, at Tennant Company's option, parts that do not conform to this Warranty.

No warranty of any kind is extended to equipment that is sold for salvage.

LABOR COVERAGE

For thirty (30) days from date of delivery Tennant Company will, at its option, provide labor for repair, pay outside repair service, or pay the customer straight time in accordance with Tennant Company flat rate schedule for particular warranty repair. After thirty (30) days, Tennant Company's sole obligation shall be limited to the repair or replacement, at Tennant Company's option, of parts that do not conform to this Warranty.

REPAIR PARTS

Repair parts supplied by Tennant Company are warranted against defects for the period stated below. Tennant Company's obligation is limited to the replacement of the warranted part, and Tennant Company shall not be obligated to provide labor (except certain engines also stated below) in installing such part.

ENGINES, SHORT BLOCKS, AND LONG BLOCKS

Manufacturer	Warranty Period	Manufacturer	Warranty Period
Continental	1 year or 1500 hours parts & labor	Perkins	1 year or 1500 hours parts & labor
Kohler	1 year or 1500 hours parts & labor (except Kohler Model K161S -500 hours)	Kubota	1 year or 1500 hours parts & labor
Briggs & Stratton	90 days or 200 hours parts & labor	Wisconsin	1 year or 500 hours parts & labor
Onan	1 year or 1500 hours parts & labor	Ford	1 year or 1500 hours parts only

• Engine part replacements such as water pumps, carburetors, and alternators are warranted for thirty (30) days parts only, no labor.

• Labor is to include only the time it takes to repair an engine. It does not include removal and replacement nor does it include travel time.

MAJOR HYDRAULIC COMPONENTS (PUMPS, MOTORS, CYLINDERS, AND CONTROL VALVES)

Manufacturer	Warranty Period	Manufacturer	Warranty Period
Cessna	1 year parts only	Oilgear	1 year parts only
Char-Lynn	1 year parts only	Gresen	90 days parts only
Victor (Dukes)	1 year parts only	MTE	90 days parts only
Ross	1 year parts only	Barnes	90 days parts only
Vickers	1 year parts only		

• All seal kits and replacement parts are warranted for thirty (30) days parts only.

MAJOR ELECTRIC MOTORS

Manufacturer	Warranty Period	Manufacturer	Warranty Period
Saldor	1 year parts only	Ohio Electric	1 year parts only
General Electric	1 year parts only	HK Porter	1 year parts only

All other repair parts are warranted for thirty (30) days only.

SERVICE LABOR

Labor performed by a Tennant Company service representative shall be warranted for thirty (30) days from the date the repairs are completed. This policy does not cover work performed by any service company, other than Tennant Company, and is restricted to the specific repair operation or component for which a claim is made.

THIS WARRANTY IS EXPRESSLY IN LIEU OF ALL OTHER EXPRESSED OR IMPLIED WARRANTIES INCLUDING THE WARRANTIES OF MERCHANTABILITY AND FITNESS AND OF ALL OTHER OBLIGATIONS AND LIABILITIES ON THE PART OF TENNANT COMPANY, INCLUDING LIABILITIES FOR DIRECT, IMMEDIATE, SPECIAL, INDIRECT, OR CONSEQUENTIAL DAMAGES ARISING OUT OF THE FAILURE OF ANY MACHINE OR PART OF IT TO OPERATE PROPERLY, INCLUDING THE COST OR EXPENSE OF PROVIDING SUBSTITUTE EQUIPMENT OR SERVICE DURING PERIODS OF MALFUNCTION OR NON-USE.

This Warranty cannot be amended, altered, or modified by any representative of Tennant Company.

Home

Find...

Go To..





TENNANT COMPANY WORLD HEADQUARTERS, MINNEAPOLIS, MN 55440 U.S.A.

Home	Find...	Go To..		
------	---------	---------	--	--